



Promotional Matting

Grow Excitement

Increase Awareness

Build Confidence

A black rectangular mat with a logo in the bottom left corner. The logo consists of a stylized flame icon above the word 'KOKKA' in large, bold, yellow letters. Below 'KOKKA' is the text 'FIRESIDE GRILL' in smaller, red, sans-serif letters.

KOKKA
FIRESIDE GRILL

2015
PRODUCT
CATALOG

www.CrownMats.com

Grow Excitement

#020 Marathon™ Graphic Inlay
#021 Oxford™ Elite Graphic Inlay
#022 Cross-Over™ Graphic Inlay

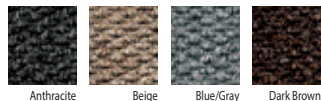
Precision cut to ensure accuracy, Graphic Inlay® mats are designed to boost logo and message presence while protecting floors of all types. Known for delivering striking clarity and an attractive texture, Graphic-Inlay® mats provide the perfect image-enhancing "Welcome" at entranceways, office building lobbies, schools, airports and sport concourses; all while keeping dirt at bay and decreasing maintenance costs.



Oxford™ Elite Graphic Inlay p. 3

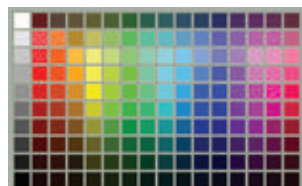
#020 Marathon™ Graphic Inlay

BASE COLORS



Total Confidence Warranty

LOGO COLORS



UP TO 150 AVAILABLE COLORS

AVAILABILITY

STANDARD SIZES

3' x 5'
3' x 10'
4' x 6'
4' x 8'
4' x 10'
6' x 10'

LEAD TIME

3 Weeks

CUSTOM SIZES

Available. Contact Crown
Customer Service
Max size 11'6" x 60"



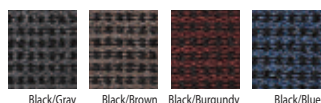
HEAVY TRAFFIC

- Educational facilities
- Airports
- Healthcare
- Government buildings

• Logo PMS color match
available (surcharge)

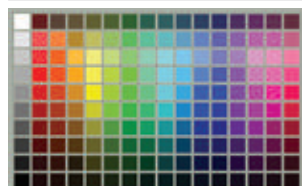
#021 Oxford™ Elite Graphic Inlay

BASE COLORS



Total Confidence Warranty

LOGO COLORS



UP TO 150 AVAILABLE COLORS

AVAILABILITY

STANDARD SIZES

3' x 5'
3' x 10'
4' x 6'
4' x 8'
4' x 10'
6' x 10'

LEAD TIME

3 Weeks

CUSTOM SIZES

Available. Contact Crown
Customer Service
Max size 11'6" x 60"



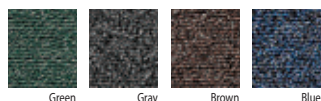
HEAVY TRAFFIC

- Educational facilities
- Airports
- Healthcare
- Government buildings

• Logo PMS color match
available (surcharge)

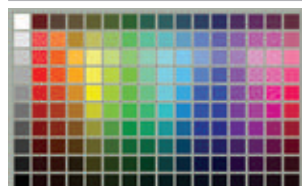
#022 Cross-Over™ Graphic Inlay

BASE COLORS



Total Confidence Warranty

LOGO COLORS



UP TO 150 AVAILABLE COLORS

AVAILABILITY

STANDARD SIZES

3' x 5'
3' x 10'
4' x 6'
4' x 8'
4' x 10'
6' x 10'

LEAD TIME

3 Weeks

CUSTOM SIZES

Available. Contact Crown
Customer Service
Max size 11'6" x 60"



HEAVY TRAFFIC

- Educational facilities
- Airports
- Healthcare
- Government buildings

• Logo PMS color match
available (surcharge)

Increase Awareness

#010 Flocked Mats

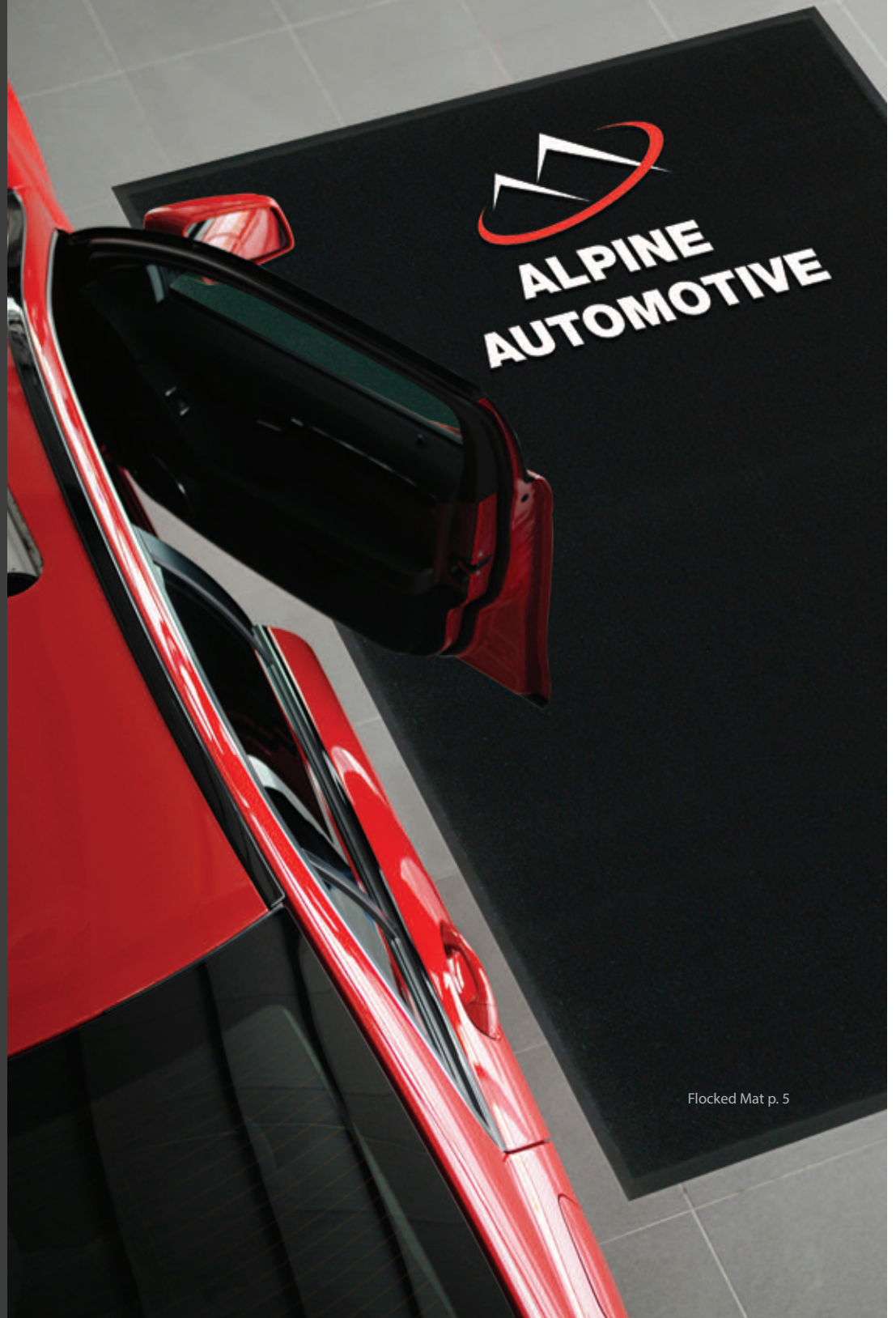
Perfect for promoting a business or service in lower-traffic environments; you won't find a better overall value. Offering logo builds using up to 4 colors; flocked mats are available up to a maximum mat size of 4' x 6'. These mats are a popular indoor choice for small office buildings, assisted living facilities, or in front of display units where a promotional message can boost product awareness and drive incremental sales.

#050 Embossed Anti-Fatigue

Embossed Anti-Fatigue mats couple sharp, bold graphics with the benefit of comforting tired feet and legs. A great choice for Veterinary Clinics, Yacht/Boat showroom platforms, Kiosk stations for National Accounts and online store promotional mats.

#025 Super Soaker™ Inlay

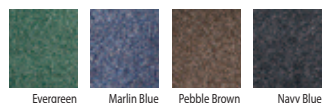
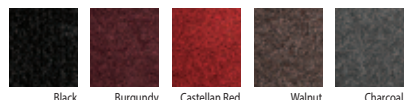
This diverse mat can be used indoors and outdoors if under an overhang cover, making it well-suited for medium traffic entrance ways such as office buildings, schools, restaurants, and malls. Thanks to the nitrile rubber cleated back, the Super-Soaker™ can be placed over carpet or on non-carpeted floors.



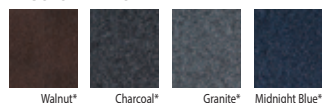
Flocked Mat p. 5

#010 Flocked Mat

BASE COLORS

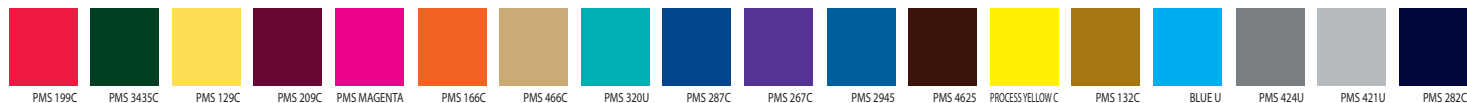


*ECO-STEP™ ONLY



LOGO COLORS

NOTE: **Black and White** Also Available



AVAILABILITY

STANDARD SIZES

2' x 3' 3' x 4' 3' x 5'
3' x 6' 4' x 6'

LEAD TIME

2-3 Weeks

CUSTOM SIZES

Available. Contact Crown Customer Service
Mats larger than 4' x 6' only allows 1-color design



LIGHT TO MEDIUM TRAFFIC

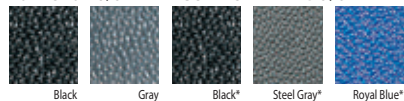
- Small retail stores
- Independent insurance office
- Promotional mat
- Setup fee required

#050 Embossed Anti-Fatigue Mat

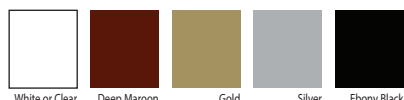
BASE COLORS

TUFF SPUN 3/8"

*COMFORT-KING 3/8"



LOGO COLORS



AVAILABILITY

STANDARD SIZES

2' x 3' 3' x 4' 3' x 5'
3' x 5' 3' x 10'

LEAD TIME

3-5 Weeks

CUSTOM SIZES

Limited. Contact Crown Customer Service

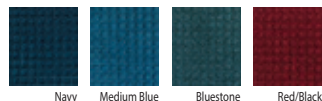
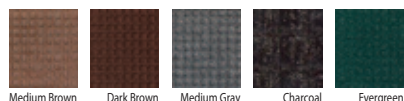


PROMOTIONAL MAT

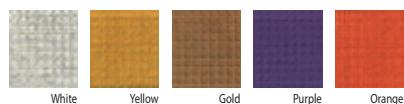
- Finish:** **Style 1** – Embossed no color
Style 2 – Embossed with vinyl
Style 4 – Digital file print. Contact Customer Service
- Setup charge required | Min. order 50 pcs
 - Anti-microbial available

#025 Super-Soaker™ Inlay

BASE COLORS



LOGO COLORS



AVAILABILITY

TRADE SIZES*

2' x 3' 3' x 4' 3' x 5' 3' x 6'
3' x 10' 3' x 12' 3' x 15' 3' x 20'
4' x 6' 4' x 8' 4' x 10' 4' x 12'
4' x 14' 4' x 16' 4' x 20' 6' x 5'
6' x 6' 6' x 8' 6' x 10' 6' x 12'
6' x 14' 6' x 16' 6' x 18' 6' x 20'

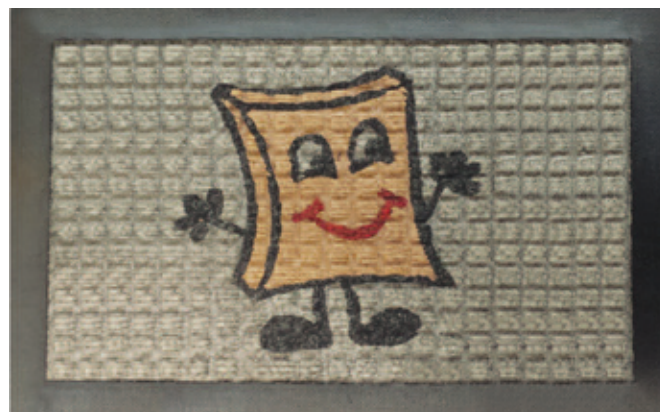
*Trade sizes - see actual in price list

LEAD TIME

3-5 Days

CUSTOM SIZES

Unavailable



HEAVY TRAFFIC

- Business or home
- Educational facilities
- Airports
- Grocery Stores

Build Confidence

#035 HD Jet-Print™

Combine unlimited color combinations with up to 10x the definition of traditionally printed mats, and you'll understand why customers choose HD Jet-Print™ when they require high impact messaging. This mat is designed specifically for use indoors both in aisles and around counters and kiosks.

#030 Jet-Print™

Our classic digitally enhanced logo wiper mat builds your image, while making entrance areas safer and any environment cleaner. An excellent choice when placing mats around kiosks and counters, as well as aisle and entryways.

#40 Crown-Tred™ Printed

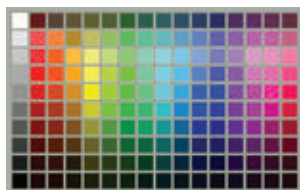
Our Crown-Tred™ Printed mats are specifically designed to provide excellent image clarity and color tones outdoors (UV resistant) and between entrance doors. The entrance of a building is one of the most valuable pieces of "visual real estate" you own. Be certain to take advantage of this high-traffic, highly influential space with a mat that can both impress and welcome your guests!

New Haven Medical



#035 HD Jet-Print™

BASE / LOGO COLORS



UP TO 150 AVAILABLE COLORS

Total Confidence Warranty

AVAILABILITY

TRADE SIZES*

2' x 3'	5' x 8'
3' x 4'	5' x 10'
3' x 5'	6' x 12'
3' x 10'	6' x 10'
4' x 6'	
4' x 8'	

*Trade sizes - see actual in price list

LEAD TIME

10 Days

CUSTOM SIZES

Available. Contact Crown Customer Service



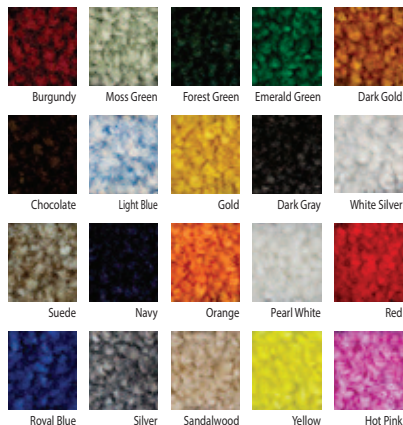
MEDIUM/MODERATE TRAFFIC

- Healthcare facilities
- Educational facilities
- Grocery Stores
- Vinyl backing for maximum floor protection
- Logo PMS color match available (surcharge)

#030 Jet-Print™

BASE COLORS

NOTE: **Black** Also Available



LOGO COLORS

UP TO 300 AVAILABLE COLORS

AVAILABILITY

TRADE SIZES*

2' x 3'	5' x 8'
3' x 4'	5' x 10'
3' x 5'	6' x 12'
3' x 10'	6' x 10'
4' x 6'	
4' x 8'	

*Trade sizes - see actual in price list

LEAD TIME

5-7 Days

CUSTOM SIZES

Available. Contact Crown Customer Service

Total Confidence Warranty



MEDIUM/MODERATE TRAFFIC

- Hospitality facilities
- Educational facilities
- Business or home
- Logo PMS color match available (surcharge)

#040 Crown-Tred™ Printed

BASE COLORS



Black

Total Confidence Warranty

AVAILABILITY

TRADE SIZES*

2 1/2' x 3'	4' x 8'
3' x 5'	6' x 6'
3' x 10'	6' x 8'
4' x 6'	

*Trade sizes - see actual in price list

LEAD TIME

3-5 Days

CUSTOM SIZES

Unavailable

LOGO COLORS



UP TO 150 AVAILABLE COLORS



MEDIUM/MODERATE TRAFFIC

- Retail stores
- Educational facilities
- Outdoor nitrile rubber mat
- Logo PMS color match available (surcharge)

Crown Matting Technologies,

has been setting the pace in commercial matting, using proprietary innovative technologies to further our products and provide incomparable value to the industry for over 70 years.

From front door to back, and every step in between, Crown brings forward comprehensive matting solutions by offering the most diverse selection of matting in the industry, while continuing to lead in the area of custom cut matting solutions.

Crown Matting Technologies has been fortunate to serve a generation of business owners and public institutions, helping maintain and improve both the appearance and safety of buildings worldwide. We're honored to have done so. We look forward to continuing to bring forward innovative and comprehensive matting solutions for generations to come ... one mat at a time.

Working hard for the hard working.™

Warranty Policies

Crown Matting Technologies' minimum warranty is a one-year limited warranty based on product type. Please refer to www.CrownMats.com for promotional matting warranty information.

Patents, Copyrights, Trademarks

Upon signing the final proof, the purchaser assumes all liability that may result from action taken against Crown Matting Technologies for patent, copyright, or trademark infringement.

Shipping

FOB Factory. We reserve the right to ship by the most beneficial means of transportation. Smaller orders will be shipping via Fed Ex or UPS Ground, and larger orders will be shipped via truck line carrier.

Terms and Conditions

Refer to the Crown Promotional Matting Price List.

Variances

Sizes are not always exact measurement and typically have a 3-5% variance due to the materials and manufacturing processes. Colors may not be exact match of previous order. Illustrations and chips shown in catalog are approximate colors only. Please call for samples before final color selection.

Recessed Well Areas must be fitted and installed on location. Exact size will not be guaranteed by factory when ordering for a recessed area. All tolerances still apply to special cut items.

Notifications

Upon final approval, the purchaser authorizes Crown Matting Technologies to use a sample of the product for publication and publicity concerning Crown's Promotional Matting program. Logos shown in this catalog are for display purposes only.

The logos may only be purchased through the company or representative of that company owning the rights to the logo or message.



www.CrownMats.com

PRODUCTS AND THEIR RELATED DETAILS ARE SUBJECT TO CHANGE. PLEASE CONTACT OUR CUSTOMER SERVICE DEPARTMENT TO OBTAIN CURRENT INFORMATION.

