



Trash Can Features and Benefits

32 and 44 Gallon Sizes

Lids Pass NSF STD 21
Test for Impact and
Loading Strength

Handle Design
Effectively Locks
the Lid to the Can

Raised Lid Profile
Allows Stacking
and Lets Water
Run Off

Reinforced Rim
Stays Round
for Easy, Efficient
Lid Locking

Recessed Wall has
Extra Strength

Cold Weather Tested to
-20F, Passing NSF STD 21

Thick Can Bottom Design
with Reinforcements
Give Extra Strength
and Abrasion Resistance

Male Profile Securely
Holds 32 and 44 Gal.
Trash Cans

Trash Cans are as
Strong, Durable and
Lightweight as Other
Industry Leading Cans.
Meets or Exceeds
NSF STD 21 Test Standards

0.105" Thick
Molded Lid

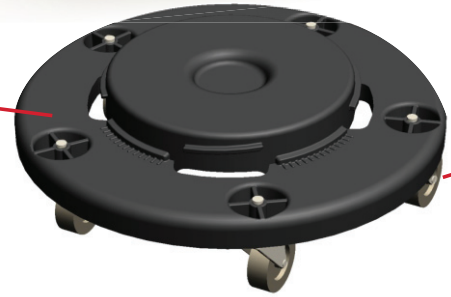
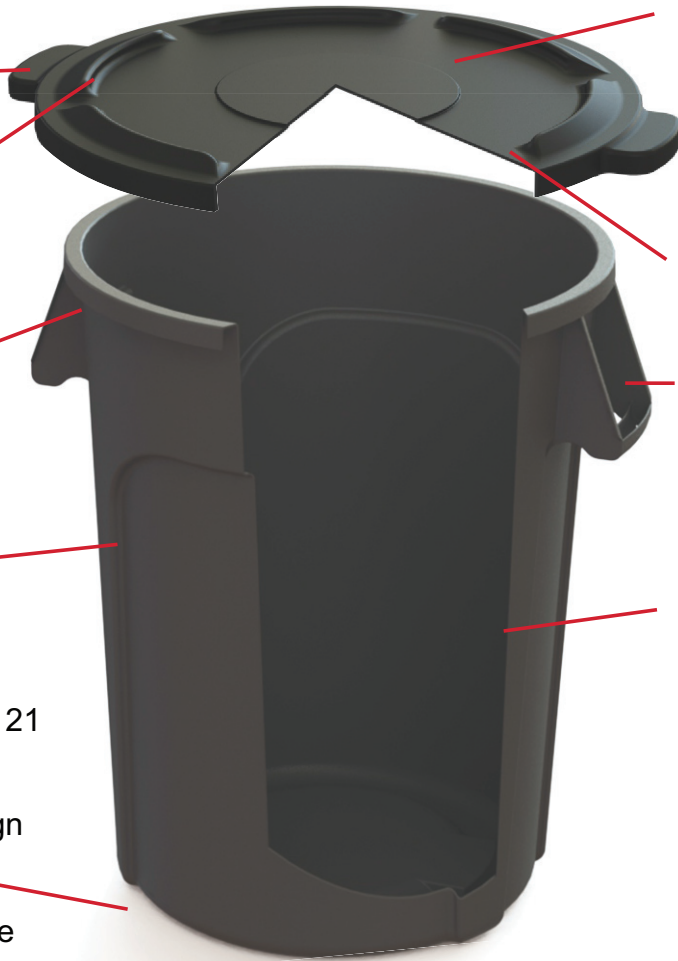
Molded Ergonomic
Handle Grips Give
Extra Strength
and Longer Life

0.105" Thick Side Wall
Exceeds NSF STD 21
Test for Strength and
Abrasion Resistance

Can and Lid are Constructed
with LLDPE/HDPE
Polyethylene for
Incredible Durability,
Flexibility and Strength

Constructed Without Any
Reprocessed Plastic

325 lb. Capacity Dolly
Has 5 Non-Marking
Plastic Wheels



Nexstep Commercial Products
1450 W. Ottawa Road • Paxton, IL 60957-0071
217-379-2377 • Fax 217-379-9901
Email: customerservice@ocedarcommercial.com
web: www.ocedarcommercial.com

