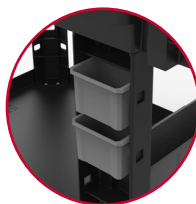


## UTILITY CART



## KEY FEATURES



CUSTOMIZABLE BIN SYSTEM

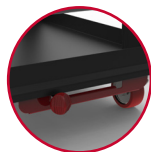
- Optimize storage strategies with movable bins
- Bins sit securely in grooves of cart
- Perfect for organizing hand tools, fasteners, and other small accessories



UTILITY SIDE RAIL

- Rail on outer edge of top platform provides more storage solutions
- Hook spray bottles onto rail to keep them in reach
- Bins fit securely in rail for more versatile storage options

## 360° ADJUSTABLE CASTER SYSTEM



ADJUSTABLE CASTER SYSTEM

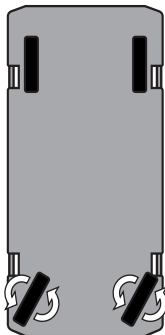
Innovative caster system allows for a fixed front caster mode, which keeps the utility cart straight when desired, or full-range 360° movement, perfect for tight spaces, sharp corners, turn-arounds, and side-to-side handling.

## OTHER NOTABLE FEATURES

- Push handle can be fixed in three (3) functional angles based on preference
- Optional ladder hook provides a sturdy storage solution for small- and medium-sized ladders
- Tray-style top and bottom platforms allow easy access to equipment
- Conduit storage holes through verticals offer customizable storage options

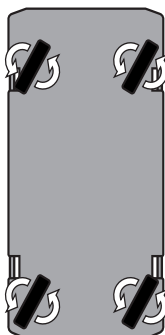
### FIXED

Slide lever to the left for traditional fixed positioning



### FULL-RANGE

Slide lever to the right for full-range 360° maneuvering



## MULTIPLE SIZES AVAILABLE

### 19" X 37" UTILITY CART

SIZE: 19" W x 37" L x 33" H  
CAPACITY: 500 LBS  
AVAILABLE IN STANDARD DUTY, HEAVY DUTY, AND PNEUMATIC

### 26" X 45" UTILITY CART

SIZE: 26" W x 45" L x 33" H  
CAPACITY: 500 LBS  
AVAILABLE IN STANDARD DUTY, HEAVY DUTY, AND PNEUMATIC

### 26" X 55" UTILITY CART

SIZE: 26" W x 55" L x 33" H  
CAPACITY: 750 LBS  
AVAILABLE IN STANDARD DUTY, HEAVY DUTY, AND PNEUMATIC

Products are subject to change without notice;  
Dimensions, colors, and weight may vary from the actual product.  
Patents Pending  
Available Fall 2016