



## HOW FAST? HERBICIDES IN ACTION



### NON-SELECTIVE HERBICIDES

Bare ground results can be achieved in areas plagued by persistent unwanted vegetation by utilizing non-selective herbicides. These formulas have been specifically designed to quickly eliminate the toughest perennial weeds, and new plant growth for an extended period. Ideal for use in areas such as ditches, fence rows, parking lots, patios, brick paths and railroad tracks.

#### #145 ELIMINATOR™

1.85% Diquat Dibromide, 1:8 concentrate (terrestrial), non-residual, aquatic weed and algae control, VOC compliant

- Non-selective – replant 5-7 days after application
- Ideal for eliminating specific weeds that are close to desired flowers, shrubs, brushes and trees
- Kills most forms of plant growth without damage to the soil
- Effects are visible in only a few days
- Works only when it is absorbed by the foliage – deactivates on contact with soil

**2 Hours**



**23 Hours**



**3 Days**



#### #150 ZAP-IT™

0.96% Glyphosate, ready-to-use, non-residual, VOC compliant

- RTU herbicide for those who need a non-selective “spot” weed killer around landscaped areas
- Kills most forms of plant growth without damage to the soil
- Effects are visible in only 1-2 weeks
- Works only when it is absorbed by the foliage – deactivates on contact with soil

**24 Hours**



**2 Days**



**7 Days**



#### #314 VACATE™

1.10% 2,4-D, 0.61% Bromacil, ready-to-use, soil sterilant, VOC compliant

- Provides fast knockdown
- Long-lasting residual action
- VOC compliant alternative to #320 Barren

**2 Hours**



**7 Hours**



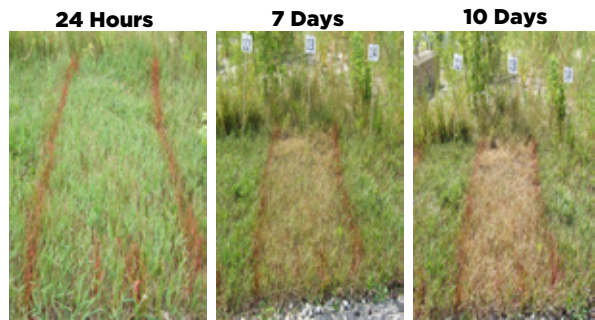
**4 Days**



## #316 WEED EASY™

4% Bromacil granules, soil sterilant, VOC compliant

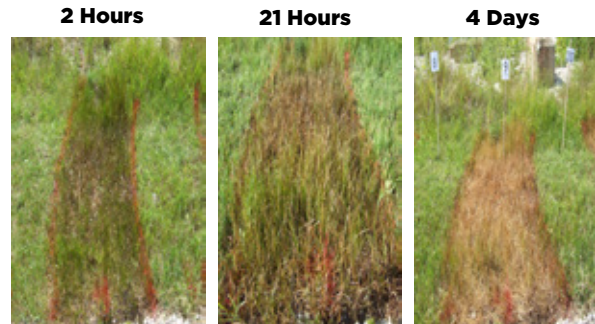
- Residual action prevents growth up to 1 year
- Easy-to-spread granules



## #320/#321 BARREN™

1.09% 2,4-D, 0.98% Bromacil, ready-to-use, soil sterilant

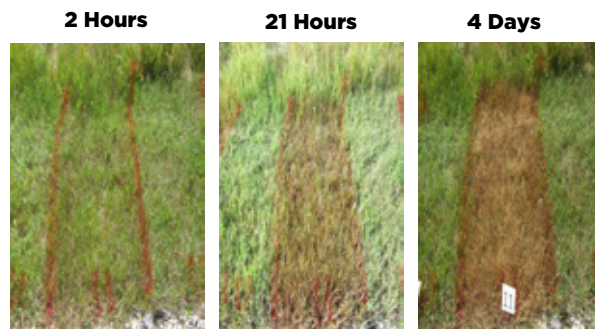
- Provides extremely fast knockdown
- Residual action prevents growth up to 1 year



## #322 TURF KING™

3.73% Prometon, 1:10 concentrate, soil sterilant

- Residual action prevents growth up to 1 year



## ACTIVE INGREDIENTS

**2,4-D / 2,4-D SALTS** - Mimics the action of a growth hormone within the plant. It stimulates unusually rapid growth which strains the life support system of the plant to a point where death occurs.

**BROMACIL** - A residual herbicide which acts as a soil sterilant to prevent vegetation growth for an extended period of time. Works slowly as it is carried to the root zone through moisture and absorption.

**DIGUAT DIBROMIDE** - When absorbed, it disrupts the photosynthesis process and kills the unwanted plant. This contact herbicide eliminates surface vegetation so replanting can occur soon after application. It deactivates upon contact with the soil, and can be used to kill aquatic weeds.

**GLYPHOSATE** - Enters the metabolism of the weed and inhibits its growth. Systemic action kills the entire plant, roots and leaves. Becomes inactive upon contact with soil.

**MCPP / 2,4-DP / 2,4-D** - A group of systemic herbicides designed to kill specific broadleaf weeds. Once absorbed into the plant, they kill them by disrupting important metabolic processes within.

**PROMETON** - Works through root and foliage absorption. This photosynthesis-inhibiting herbicide acts as a soil sterilant to control regrowth and new seedlings.

