



## PRODUCT CATALOG, 2019



WASTE MANAGEMENT



MATERIAL HANDLING



HOSPITALITY



STORAGE



SEATING



# WHY SUNCAST COMMERCIAL?

***We take pride in creating high-quality, innovative, and thoughtful products for the commercial space.***

As a market leader in high-quality resin, wood, and metal products made in the U.S.A. for over 25 years, we believe in constant change and innovation to make your life and job easier. We are committed to leading the way in highly intentional products to do just that.

We listen to our customers and end users to develop new products. The best innovations come from listening to problems and properly interpreting the issues to create a solution. This is an art we have mastered—and will continue to master with every new item we deliver.

Suncast Commercial products are proudly manufactured in our facility in Batavia, IL. Some products may include components sourced globally.



## DESK-SIDE RESIN TRASH CANS



TCIND1012 model shown with TCINDLID12 lid

### KEY FEATURES DUAL-ACTION SWING TOP LID DESIGN



- Lid swings down for quick disposal or lifts up for wide opening (Compatible with TCIND712 and TCIND1012 models)
- Injection molded for precise fit and clean edges

### SLEEK DESIGN WITH SLIM PROFILE



- Rounded corners for a more modern look
- Perfect for any workspace in the office, home or classroom

### ADDITIONAL FEATURES

- Durable resin construction will not rust, dent or chip
- Smooth surface is easy to clean
- Conveniently fits under most desks and tight spaces

### 3 GALLON DESK-SIDE RESIN TRASH CAN

SIZE: 11.75" W x 8.31" L x 12.13" H  
WEIGHT: 0.72 lbs



MODEL#	COLOR
TCIND312	BLACK ●
TCIND312S	SAND ●

### 7 GALLON DESK-SIDE RESIN TRASH CAN

SIZE: 14.6" W x 10.5" L x 15.25" H  
WEIGHT: 1.27 lbs



MODEL#	COLOR
TCIND712	BLACK ●
TCIND712S	SAND ●

### 10 GALLON DESK-SIDE RESIN TRASH CAN

SIZE: 15.5" W x 11.31" L x 20.50" H  
WEIGHT: 1.89 lbs



MODEL#	COLOR
TCIND1012	BLACK ●
TCIND1012S	SAND ●



### DUAL-ACTION SWING TOP LID

SIZE: 15.81" W x 11.625" L x 2.25" H  
WEIGHT: 0.57 lbs

MODEL#	COLOR
TCINDLID12	BLACK ●



Two swing disposal options compatible with 7 Gal (TCIND712) and 10 Gal (TCIND1012) models.

### 3 GALLON DESK-SIDE RESIN RECYCLE TRASH CAN

SIZE: 11.75" W x 8.31" L x 12.13" H  
WEIGHT: 0.72 lbs



MODEL#	COLOR
TCIND312BLR	BLUE/RECYCLE ●

### 7 GALLON DESK-SIDE RESIN RECYCLE TRASH CAN

SIZE: 14.6" W x 10.5" L x 15.25" H  
WEIGHT: 1.27 lbs



MODEL#	COLOR
TCIND712BLR	BLUE/RECYCLE ●

### 10 GALLON DESK-SIDE RESIN RECYCLE TRASH CAN

SIZE: 15.5" W x 11.31" L x 20.50" H  
WEIGHT: 1.89 lbs



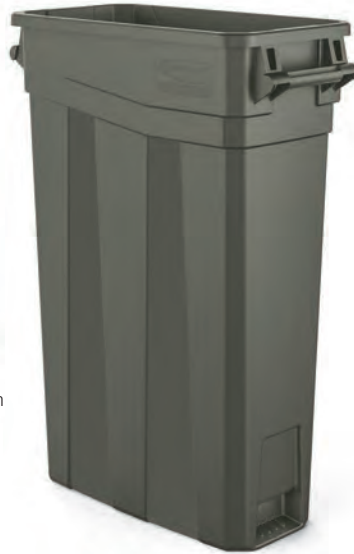
MODEL#	COLOR
TCIND1012BLR	BLUE/RECYCLE ●

Products are subject to change without notice; Dimensions, colors, and weight may vary from the actual product.

## RESIN SLIM TRASH CANS WITH AND WITHOUT HANDLES



TCN2030 model shown



TCNH2030 model shown



### KEY FEATURES FOOT ASSIST

- Holds can down during liner removal



### EXTRA-LARGE AIR CHANNELS

- Allows for effortless liner removal

### ADDITIONAL FEATURES

- Heavy-duty polymer for strength and rigidity
- Won't rust or chip and is resistant to denting and bending
- Handles feature bag cinches for easy bag management without knot tying
- Multiple colors available

### 23 GALLON RESIN SLIM TRASH CAN WITH HANDLES

SIZE: 11.086" W x 22.02" L x 30" H  
WEIGHT: 7 lbs



MODEL#	COLOR
TCNH2030BK	BLACK ●
TCNH2030	GRAY ●
TCNH2030BL	BLUE ●
TCNH2030G	DARK GREEN ●
TCNH2030S	SAND ●



### RECYCLE 23 GALLON RESIN SLIM TRASH CAN WITH HANDLES

SIZE: 11.086" W x 22.02" L x 30" H  
WEIGHT: 7 lbs



MODEL#	COLOR
TCNH2030BLR	BLUE/RECYCLE ●

### 23 GALLON RESIN SLIM TRASH CAN

SIZE: 11.086" W x 19.986" L x 30" H  
WEIGHT: 7 lbs



MODEL#	COLOR
TCN2030BK	BLACK ●
TCN2030	GRAY ●
TCN2030BL	BLUE ●
TCN2030G	DARK GREEN ●
TCN2030S	SAND ●



### RECYCLE 23 GALLON RESIN SLIM TRASH CAN

SIZE: 11.086" W x 19.986" L x 30" H  
WEIGHT: 7 lbs



MODEL#	COLOR
TCN2030BLR	BLUE/RECYCLE ●

Products are subject to change without notice;  
Dimensions, colors, and weight may vary from the actual product.

## OPTIONAL ACCESSORIES\*



### DOUBLE FLIP LID

SIZE: 11.83" W x 20.548" L x 3.851" H  
WEIGHT: 3.18 lbs

MODEL#	COLOR
TCNLID01BKD	BLACK ●
TCNLID01D	GRAY ●
TCNLID01BLD	BLUE ●
TCNLID01GD	DARK GREEN ●
TCNLID01SD	SAND ●



### RESIN DOLLY

SIZE: 11.882" W x 20.782" L x 6.177" H  
WEIGHT: 5.38 lbs

MODEL#	COLOR
TCNDOLLY	BLACK ●



### BOTTLE AND CAN LID

SIZE: 11.873" W x 20.248" L x 1.409" H  
WEIGHT: 1.04 lbs

MODEL#	COLOR
TCNLID02BKD	BLACK ●
TCNLID02D	GRAY ●
TCNLID02BLD	BLUE ●
TCNLID02GD	DARK GREEN ●
TCNLID02SD	SAND ●



### STAINLESS STEEL DOLLY

SIZE: 10.375" W x 18.437" L x 8.687" H  
WEIGHT: 6.36 lbs

MODEL#
TCNDOLLYSS



### PAPER RECYCLING LID

SIZE: 11.873" W x 20.248" L x 1.356" H  
WEIGHT: 1.04 lbs

MODEL#	COLOR
TCNLID03BKD	BLACK ●
TCNLID03D	GRAY ●
TCNLID03BLD	BLUE ●
TCNLID03GD	DARK GREEN ●
TCNLID03SD	SAND ●

\*Optional accessories sold separately.

Products are subject to change without notice; Dimensions, colors, and weight may vary from the actual product.

## RESIN WHEELED TRASH CANS



BMTCW65 model shown



Multiple sizes available

### KEY FEATURES CLEAN ACCESS HANDLE ON LID

- Enhanced polymers in lid for lasting durability

### DRAIN PLUG

- For easy clean out

### NYLON BUSHINGS

- For a smoother ride



### ADDITIONAL FEATURES

- Won't rust or chip and resistant to denting and bending
- Blow-molded HDPE for strength and rigidity
- Cold-impact construction stands up to cold environments



BMTCW32

### 32 GALLON RESIN WHEELED TRASH CAN

SIZE: 20.25" W x 26.5" L x 36.5" H  
WEIGHT: 15 lbs

MODEL#	COLOR
BMTCW32	GRAY
BMTCW32BL	BLUE



BMTCW50

### 50 GALLON RESIN WHEELED TRASH CAN

SIZE: 23.32" W x 30" L x 38.46" H  
WEIGHT: 24 lbs

MODEL#	COLOR
BMTCW50	GRAY
BMTCW50BL	BLUE



BMTCW65

### 65 GALLON RESIN WHEELED TRASH CAN

SIZE: 27" W x 31.26" L x 40.86" H  
WEIGHT: 29 lbs

MODEL#	COLOR
BMTCW65	GRAY
BMTCW65BL	BLUE



BMTCW96

### 96 GALLON RESIN WHEELED TRASH CAN

SIZE: 30.28" W x 35" L x 43.54" H  
WEIGHT: 37 lbs

MODEL#	COLOR
BMTCW96	GRAY
BMTCW96BL	BLUE

### RECYCLE 50 GALLON RESIN WHEELED TRASH CAN

SIZE: 23.32" W x 30" L x 38.46" H  
WEIGHT: 24 lbs

MODEL#	COLOR
BMTCW50BLR	BLUE/RECYCLE



BMTCW50BLR

Products are subject to change without notice; Dimensions, colors, and weight may vary from the actual product.

## RESIN UTILITY TRASH CANS



BMTCU55 model shown



### KEY FEATURES EXTRA-LARGE AIR CHANNELS

- Allow effortless liner removal



### REINFORCED BASE

- Up to 76% stronger to reduce wear and tear from dragging



Multiple colors and sizes available

### ADDITIONAL FEATURES

- Puncture resistant blow-molded HDPE is up to 66% stronger
- Won't rust or chip and resistant to denting and bending
- Cold-impact construction stands up to cold environments
- Side handles for easy lifting and transportation
- Handles feature tie-downs and bag cinches to manage heavy loads

### 20 GALLON RESIN UTILITY TRASH CAN

SIZE: 23.3" W x 19.4" L x 23.25" H  
WEIGHT: 6.13 lbs



MODEL#	COLOR
BMTCU20	BLACK ●
BMTCU20BL	BLUE ●
BMTCU20G	DARK GREEN ●

### 44 GALLON RESIN UTILITY TRASH CAN

SIZE: 28.4" W x 24" L x 32" H  
WEIGHT: 13.56 lbs



MODEL#	COLOR
BMTCU44	BLACK ●
BMTCU44BL	BLUE ●
BMTCU44G	DARK GREEN ●

### 32 GALLON RESIN UTILITY TRASH CAN

SIZE: 26.1" W x 21.9" L x 28.75" H  
WEIGHT: 9.55 lbs



MODEL#	COLOR
BMTCU32	BLACK ●
BMTCU32BL	BLUE ●
BMTCU32G	DARK GREEN ●

### 55 GALLON RESIN UTILITY TRASH CAN

SIZE: 30.9" W x 26.4" L x 33.2" H  
WEIGHT: 16.5 lbs



MODEL#	COLOR
BMTCU55	BLACK ●
BMTCU55BL	BLUE ●
BMTCU55G	DARK GREEN ●

### RECYCLE 32 GALLON RESIN UTILITY TRASH CAN

SIZE: 26.1" W x 21.9" L x 28.75" H  
WEIGHT: 9.55 lbs

MODEL#	COLOR
BMTCU32BLR	BLUE/RECYCLE ●



Products are subject to change without notice; Dimensions, colors, and weight may vary from the actual product.

## OPTIONAL ACCESSORIES\*



**20 GALLON LID**  
 SIZE HANDLE TO HANDLE:  
 21.09" W x 2.55" H  
 WEIGHT: 1.59 lbs

MODEL#	COLOR
TCU20LIDD	BLACK ●

**44 GALLON LID**  
 SIZE HANDLE TO HANDLE:  
 25.74" W x 2.75" H  
 WEIGHT: 2.87 lbs

MODEL#	COLOR
TCU44LIDD	BLACK ●

**32 GALLON LID**  
 SIZE HANDLE TO HANDLE:  
 23.59" W x 2.65" H  
 WEIGHT: 1.95 lbs

MODEL#	COLOR
TCU32LIDD	BLACK ●

**55 GALLON LID**  
 SIZE HANDLE TO HANDLE:  
 28.14" W x 2.85" H  
 WEIGHT: 2.95 lbs

MODEL#	COLOR
TCU55LIDD	BLACK ●



### STANDARD DUTY DOLLY

SIZE: 20.66" W x 6.75" H  
 WEIGHT: 7.25 lbs  
 CAPACITY: 250 lbs

MODEL#	COLOR	CASTERS	COLOR
TCUDOLLYSD	BLACK ●	TPR	GRAY ●



### HEAVY DUTY DOLLY

SIZE: 20.66" W x 6.75" H  
 WEIGHT: 7.25 lbs  
 CAPACITY: 350 lbs

MODEL#	COLOR	CASTERS	COLOR
TCUDOLLYHD	BLACK ●	POLYURETHANE	RED ●



### CADDY

SIZE: 1.5" W x 29" L x 20.24" H  
 WEIGHT: 1.85 lbs

MODEL#	COLOR
TCUCADDY	BLACK ●



\*Optional accessories sold separately.

Products are subject to change without notice; Dimensions, colors, and weight may vary from the actual product.



## PRECISE FIT™ CONTRACTOR BAGS



UCL44320B model shown



MODEL#	DIMENSIONS	MIL	BAGS PER UNIT	CAPACITY
UCL32230B	34 in. W x 44 in. H	2 MIL	30	32 GALLONS



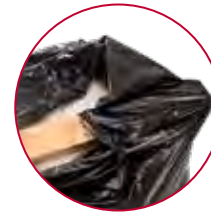
MODEL#	DIMENSIONS	MIL	BAGS PER UNIT	CAPACITY
UCL44320B	37 in. W x 48 in. H	3 MIL	20	44 GALLONS



MODEL#	DIMENSIONS	MIL	BAGS PER UNIT	CAPACITY
UCL55315B	41 in. W x 49 in. H	3 MIL	15	55 GALLONS



MODEL#	DIMENSIONS	MIL	BAGS PER UNIT	CAPACITY
UCL55615B	42 in. W x 54 in. H	6 MIL	15	55 GALLONS



### KEY FEATURES PREMIUM GRADE MATERIAL

- 2X stronger than other contractor bags



### EASY DISPENSE BOX

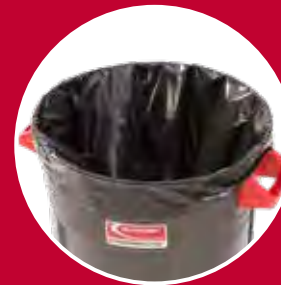
- Side holes for hanging

### ADDITIONAL FEATURES

- Great for yard work, remodeling and construction debris
- Compatible with SunCast Commercial® Utility Cans and other waste cans

### PRECISE FIT™

- Custom designed to fit specific sized utility cans
- Will not drop inside can
- Extra tall for secure overhang cling



PRECISE FIT™  
Contractor Bags



V.S.  
Traditional  
Contractor Bags

Products are subject to change without notice; Dimensions, colors, and weight may vary from the actual product.

## ACCENT SERIES™ INDOOR DECORATIVE METAL TRASH CANS



MTCRES900 model shown



### 9 GALLON CRESCENT SIDE LOAD METAL TRASH CAN

SIZE: 18.21" W x 9.20" D x 32.68" H  
WEIGHT: 26 lbs

MODEL#	COLOR
MTCRES900	STAINLESS STEEL

- Lid conceals contents for a clean look with side opening for trash disposal



### 15 GALLON FLIP TOP METAL TRASH CAN

SIZE: 15.21" W x 32.16" H  
WEIGHT: 26 lbs

MODEL#	COLOR
MTCSS1502	STAINLESS STEEL

- Flip top lid conceals contents for a clean look

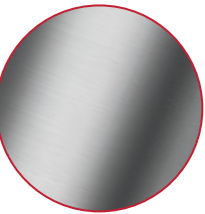


### 20 GALLON SPLIT TOP METAL TRASH CAN

SIZE: 15.21" W x 31.42" H  
WEIGHT: 30.1 lbs

MODEL#	COLOR
MTCSS1503	STAINLESS STEEL

- Dual stream lid has two separate openings
- Each liner holds up to 10 gallons



### KEY FEATURES STAINLESS STEEL CONSTRUCTION

- Constructed of rust-resistant high-grade 304 stainless steel
- Sleek look for professional appearance
- Clear coat finish creates a premium look that is fingerprint resistant



### REMOVABLE LINER

- Includes rigid galvanized liner for easy waste removal

### ADDITIONAL FEATURES

- Perfect for lobbies, elevators, schools, front entryways, restrooms and reception areas
- Comes fully assembled



### 15 GALLON FUNNEL TOP METAL TRASH CAN

SIZE: 15.25" W x 32.21" H  
WEIGHT: 25.4 lbs

MODEL#	COLOR
MTCIND1501	STAINLESS STEEL

- Easy lid removal for service



### 15 GALLON SIDE LOAD METAL TRASH CAN

SIZE: 15.21" W x 32.12" H  
WEIGHT: 27.2 lbs

MODEL#	COLOR
MTCSS1501	STAINLESS STEEL

- Lid conceals contents for a clean look with side opening for trash disposal



### 15 GALLON FRONT PUSH METAL TRASH CAN

SIZE: 15.20" W x 35.43" H  
WEIGHT: 10 lbs

MODEL#	COLOR
MTCSS1504	STAINLESS STEEL

- Lid conceals contents for a clean look with front push opening for trash disposal

Products are subject to change without notice; Dimensions, colors, and weight may vary from the actual product.

## INDOOR DECORATIVE METAL TRASH CANS



MTCIND3001 model shown



MTCIND3002 model shown



### KEY FEATURES OPEN LID ACCESS

- Easy removal for service



### REMOVABLE LINER

- For easy cleanup



### TEXTURED POWDER-COATED BODY

- Maintains a professional appearance (stainless steel on MTCRES models)

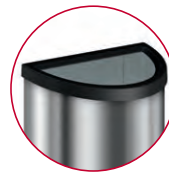
### ADDITIONAL FEATURES

- Heavy-duty construction to withstand everyday use
- Rigid plastic liner included (metal liner on MTCRES models)
- Multiple finish options available



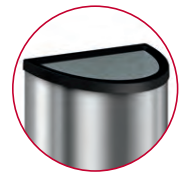
### 30 GALLON METAL INDOOR TRASH CAN

MODEL#	COLOR	SIZE	WEIGHT
MTCIND3001	BLACK PC	20.41" W x 34.37" H	43 lbs
MTCIND3002	ALUMINUM LID / BLACK PC BASE	20.41" W x 34.37" H	43 lbs



### 8 GALLON METAL CRESCENT INDOOR TRASH CAN

MODEL#	COLOR	SIZE	WEIGHT
MTCRES801	STAINLESS STEEL LID / STAINLESS STEEL BASE	13.2" W x 6.7" L x 27.53" H	13.8 lbs
MTCRES802	BLACK PC LID / STAINLESS STEEL BASE	13.46" W x 6.96" L x 27.53" H	13.2 lbs



### 12 GALLON METAL CRESCENT INDOOR TRASH CAN

MODEL#	COLOR	SIZE	WEIGHT
MTCRES1201	STAINLESS STEEL LID / STAINLESS STEEL BASE	16.45" W x 8.45" L x 32.71" H	20.2 lbs
MTCRES1202	BLACK PC LID / STAINLESS STEEL BASE	16.45" W x 8.45" L x 32.71" H	19.5 lbs

Products are subject to change without notice; Dimensions, colors, and weight may vary from the actual product.

## ENCLOSED TRASH CAN



SIZE: 21" W x 23.25" D x 43.75" H  
 WEIGHT: 55.4 lbs  
 CAPACITY: 44 gal

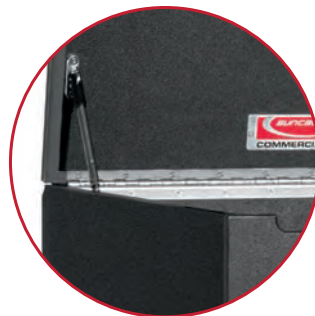
MODEL#	COLOR
TBE44BLK	BLACK 

Products are subject to change without notice; Dimensions, colors, and weight may vary from the actual product.

### KEY FEATURES

#### DURABLE

- Hinged lid with locking struts
- Made of durable resin composite material, with metal reinforcements



#### ACCESSIBLE

- Easy access front door for waste removal



#### RIGID LINER

- Includes a 44 gallon removable roto-molded rigid liner



#### ADDITIONAL FEATURES

- Metal closure keeps door in place
- No assembly required

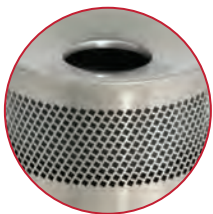
## OUTDOOR DECORATIVE PERFORATED METAL TRASH CANS



55 GALLON  
MTCPERF55

55 GALLON  
MTCPERFRM55

33 GALLON  
MTCPERF33



### KEY FEATURES

#### STAINLESS STEEL CONSTRUCTION

- Constructed of rust-resistant high-grade stainless steel
- Sleek look for professional appearance
- Clear coat finish creates a premium look that is fingerprint resistant



#### REMOVABLE LINER

- Includes rigid resin liner for easy waste removal



#### HDPE LID

- Stylish resin lid with UV inhibitors to help maintain the color over the life of the product (available on MTCPERFRM55)

### 33 GALLON PERFORATED METAL TRASH CAN

SIZE: 21.80" W x 34.73" H

MODEL#	COLOR
MTCPERF33	STAINLESS STEEL ●

### 55 GALLON PERFORATED METAL TRASH CAN

SIZE: 24.80" W x 38.39" H

MODEL#	COLOR
MTCPERF55	STAINLESS STEEL ●

### 55 GALLON PERFORATED METAL TRASH CAN 2-WAY RESIN LID

SIZE: 24.88" W x 48.22" H

MODEL#	COLOR
MTCPERFRM55	STAINLESS STEEL ●

## OUTDOOR DECORATIVE METAL TRASH CANS



MTCRND3501 model shown



### KEY FEATURES METAL FRAME

- Thermoplastic-coated
- Resists fading, cracking, peeling, or discoloring
- Excellent corrosion resistance
- High abrasion and impact resistance



### RIGID PLASTIC LINER

- Removable liner for easy clean up



### HDPE LIDS

- Stylish resin lid with UV inhibitors to help maintain the color over the life of the product
- Alternative spun metal lid with ash bonnet to match the can

### ADDITIONAL FEATURES

- Steel wire lanyard for lid connection
- Adjustable-leveling foot pads
- Multiple colors and styles available



### 35 GALLON METAL TRASH CAN ROTO MOLDED LID

SIZE: 24.88" W x 42.44" H  
WEIGHT: 118 lbs

MODEL#	COLOR	
MTCRND3501	BLACK	●
MTCRND3501B	BLUE	●
MTCRND3501G	DARK GREEN	●

### 35 GALLON METAL TRASH CAN METAL LID

SIZE: 23.97" W x 39.19" H  
WEIGHT: 120 lbs

MODEL#	COLOR	
MTCRND3502	BLACK	●
MTCRND3502B	BLUE	●
MTCRND3502G	DARK GREEN	●

### 30 GALLON METAL SQUARE TRASH CAN 2-WAY LID

SIZE: 24.41" W x 24.4" L x 47.76" H  
WEIGHT: 99 lbs

MODEL#	COLOR	
MTCSQ300	BLACK	●

For additional colors, call 800.444.3310

### 30 GALLON METAL SQUARE TRASH CAN CHUTE LID

SIZE: 22.91" W x 33.96" L x 52.41" H  
WEIGHT: 99 lbs

MODEL#	COLOR	
MTCSQ305	BLACK	●

For additional colors, call 800.444.3310

Products are subject to change without notice; Dimensions, colors, and weight may vary from the actual product.

## OUTDOOR DECORATIVE METAL SLAT TRASH CANS



MTCSLAT35RMB model shown

### KEY FEATURES METAL FRAME

- Thermoplastic-coated
- Resists fading, cracking, peeling, or discoloring
- Excellent corrosion resistance
- High abrasion and impact resistance



### RIGID PLASTIC LINER

- Removable liner for easy clean up



### HDPE LIDS

- Stylish resin lid with UV inhibitors to help maintain the color over the life of the product
- Alternative spun metal lid with ash bonnet to match the can



### ADDITIONAL FEATURES

- Steel wire lanyard for lid connection
- Latched swing door for liner removal on MTCSLAT35SA and MTCSLAT35RM models



### 35 GALLON SLAT TRASH CAN ROTO MOLDED LID

SIZE: 34.13" W x 46.38" H  
WEIGHT: 127 lbs

MODEL#	COLOR	
MTCSLAT35RMB	BLACK	●
MTCSLAT35RMBL	BLUE	●



### 35 GALLON SIDE ACCESS METAL SLAT TRASH CAN

SIZE: 34.13" W x 40.14" H  
WEIGHT: 127 lbs

MODEL#	COLOR	
MTCSLAT35SA	BLACK	●



### 35 GALLON TOP ACCESS METAL SLAT TRASH CAN

SIZE: 30.50" W x 37.07" H  
WEIGHT: 72 lbs

MODEL#	COLOR	
MTCSLAT35TA	BLACK	●

Products are subject to change without notice; Dimensions, colors, and weight may vary from the actual product.

## OUTDOOR RESIN TRASH CANS WITH SIGN RETAINING FRAMES COVERED LID CAN



RMCC3501 model shown



### KEY FEATURES CUSTOMIZABLE

- Slide-in railing system for sign advertisements on 3 sides
- Bottom retainer clip holds sign in place



### EASY CLEAN UP

- Flip open lid for quick access
- Removable rigid liner included
- Smooth surface is easy to clean



### ADDITIONAL FEATURES

- Piano hinge on lid for lasting strength
- Durable roto-molded frame
- One piece base for strength and longevity
- Base allows for concrete anchors to be used to secure the can to the ground
- Drain holes to release water
- Won't rust or chip and is resistant to denting and bending

## OPEN LID CAN



RMCC3502 model shown



### 35 GALLON RESIN CUSTOMIZABLE GARBAGE CAN WITH COVERED LID

SIZE: 28.5" W x 28.5" L x 41.7" H  
WEIGHT: 53 lbs

MODEL#	COLOR
RMCC3501	JAVA ●
RMCC3501B	BLACK ●



### 35 GALLON RESIN CUSTOMIZABLE GARBAGE CAN WITH OPEN LID

SIZE: 28.4" W x 28.4" L x 33.9" H  
WEIGHT: 44 lbs

MODEL#	COLOR
RMCC3502	JAVA ●
RMCC3502B	BLACK ●



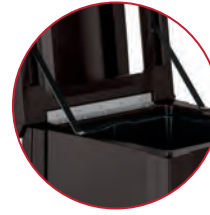
Products are subject to change without notice; Dimensions, colors, and weight may vary from the actual product.



## OUTDOOR RESIN TRASH CANS COVERED LID CAN



RMCC3501NR model shown



### KEY FEATURES DURABLE

- Piano hinge on lid for lasting strength



### EASY CLEAN UP

- Flip open lid for quick access
- Removable rigid liner included
- Smooth surface is easy to clean

### ADDITIONAL FEATURES

- Durable roto-molded frame
- One piece base for strength and longevity
- Base allows for concrete anchors to be used to secure the can to the ground
- Drain holes to release water
- Won't rust or chip and is resistant to denting and bending

## OPEN LID CAN



RMCC3502NR model shown



## 35 GALLON RESIN GARBAGE CAN WITH COVERED LID

SIZE: 28.5" W x 28.5" L x 41.7" H  
WEIGHT: 53 lbs

MODEL#	COLOR
RMCC3501NR	JAVA
RMCC3501NRBL	BLUE
RMCC3501NRB	BLACK



## 35 GALLON RESIN GARBAGE CAN WITH OPEN LID

SIZE: 28.4" W x 28.4" L x 33.9" H  
WEIGHT: 44 lbs

MODEL#	COLOR
RMCC3502NR	JAVA
RMCC3502NRBL	BLUE
RMCC3502NRB	BLACK



Products are subject to change without notice; Dimensions, colors, and weight may vary from the actual product.

## RESIN PLATFORM TRUCKS STANDARD OR HEAVY DUTY



PDPTSD2448 model shown



### WHEEL OPTIONS STANDARD DUTY

- 8" Smooth-rolling, non-marring polyurethane casters
- Polypropylene core
- Capacity up to 1,000 lbs



### HEAVY DUTY

- 8" Smooth-rolling, non-marring polyurethane casters
- Cast iron core
- Capacity up to 2,000 lbs



### KEY FEATURES STRUCTURAL FOAM

- With steel frame construction (material cutaway shown)



### INTEGRATED BRAKE

- Holds platform in place for loading and unloading



### STOWABLE HANDLE

- Conveniently tucks away under platform when not in use

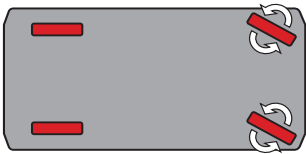
## 360° ADJUSTABLE CASTER SYSTEM



Innovative caster system allows for a fixed front caster mode, which keeps the platform truck straight when desired, or full-range 360° movement, perfect for tight spaces, sharp corners, turn-arounds, and side-to-side handling.

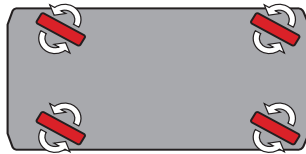
### FIXED

Slide lever to the left for traditional fixed positioning



### FULL-RANGE

Slide lever to the right for full-range 360° maneuvering



### ADDITIONAL FEATURES

- Powder-coated steel on both the handle and the frame
- Platform won't rust or chip; resistant to denting and bending

MODEL#	CASTER CORE	CAPACITY	DURABILITY
<b>SIZE: 24" W x 36" L x 40" H WEIGHT: 68 lbs SD / 90 lbs HD</b>			
PDPTSD2436	POLYPROPYLENE	1000 LBS	STAND. DUTY
PDPTH2436	CAST IRON	2000 LBS	HEAVY DUTY
<b>SIZE: 24" W x 48" L x 40" H WEIGHT: 73 lbs SD / 95 lbs HD</b>			
PDPTSD2448	POLYPROPYLENE	1000 LBS	STAND. DUTY
PDPTH2448	CAST IRON	2000 LBS	HEAVY DUTY
<b>SIZE: 30" W x 60" L x 40" H WEIGHT: 96 lbs SD / 120 lbs HD</b>			
PDPTSD3060	POLYPROPYLENE	1000 LBS	STAND. DUTY
PDPTH3060	CAST IRON	2000 LBS	HEAVY DUTY

Products are subject to change without notice; Dimensions, colors, and weight may vary from the actual product.

## METAL PLATFORM TRUCKS STANDARD AND HEAVY DUTY



MDPTSD2448 model shown



### WHEEL OPTIONS STANDARD DUTY

- 8" Smooth-rolling polyurethane casters
- Polypropylene core
- Capacity up to 1,000 lbs.



### HEAVY DUTY

- 8" Smooth-rolling polyurethane casters
- Cast iron core
- Capacity up to 2,000 lbs



### KEY FEATURES 13-GAUGE STEEL PLATFORM CONSTRUCTION

- Heavy-duty performance (material cutaway shown)



### INTEGRATED BRAKE

- Holds platform in place for loading and unloading



### STOWABLE HANDLE

- Conveniently tucks away under platform when not in use

## 360° ADJUSTABLE CASTER SYSTEM



Innovative caster system allows for a fixed front caster mode, which keeps the platform truck straight when desired, or full-range 360° movement, perfect for tight spaces, sharp corners, turn-arounds, and side-to-side handling.

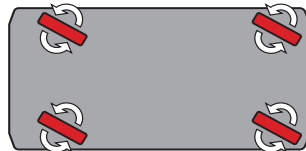
### FIXED

Slide lever to the left for traditional fixed positioning.



### FULL-RANGE

Slide lever to the right for full-range 360° maneuvering



### ADDITIONAL FEATURES

- Non-marring polyurethane casters resist flat spots under load
- Powder-coated steel on both the handle and frame

MODEL#	CASTER CORE	CAPACITY	DURABILITY
<b>SIZE: 24" W x 36" L x 40" H WEIGHT: 94 lbs SD</b>			
MDPTSD2436	POLYPROPYLENE	1000 LBS	STAND. DUTY
<b>SIZE: 24" W x 48" L x 40" H WEIGHT: 107 lbs SD / 118 lbs HD</b>			
MDPTSD2448	POLYPROPYLENE	1000 LBS	STAND. DUTY
MDPTH2448	CAST IRON	2000 LBS	HEAVY DUTY
<b>SIZE: 30" W x 60" L x 40" H WEIGHT: 135 lbs SD / 146 lbs HD</b>			
MDPTSD3060	POLYPROPYLENE	1000 LBS	STAND. DUTY
MDPTH3060	CAST IRON	2000 LBS	HEAVY DUTY

Products are subject to change without notice; Dimensions, colors, and weight may vary from the actual product.

## WOODEN PLATFORM TRUCK



WDPTSD3060 model shown



**SIZE:** 24" W x 52.25" L x 39.5" H  
**WEIGHT:** 106 lbs

MODEL#	CASTER	MAXIMUM CAPACITY
WDPTSD2448	TPR	1000 lbs



**SIZE:** 30" W x 64.25" L x 39.5" H  
**WEIGHT:** 134 lbs

MODEL#	CASTER	MAXIMUM CAPACITY
WDPTSD3060	TPR	1000 lbs

Products are subject to change without notice; Dimensions, colors, and weight may vary from the actual product.

### 360° ADJUSTABLE CASTER SYSTEM



Innovative caster system allows for a fixed front caster mode, which keeps the platform truck straight when desired, or full-range 360° movement.

#### FIXED

Slide lever to the left for traditional fixed positioning.

#### FULL-RANGE

Slide lever to the right for full-range 360° maneuvering.



### KEY FEATURES WOODEN PLATFORM

- Better sound deadening than metal



### HEAVY DUTY

- 8" Smooth-rolling, non-marring polyurethane casters
- Cast iron core
- Capacity up to 1000 lbs



### INTEGRATED BRAKE

- Holds platform in place for loading and unloading



### STOWABLE HANDLE

- Conveniently tucks away under platform when not in use



### ADDITIONAL FEATURES

- Platform won't rust or chip

## STANCHION CART



### 360° ADJUSTABLE CASTER SYSTEM



Innovative caster system allows for a fixed front caster mode, which keeps the stanchion cart straight when desired, or full-range 360° movement, perfect for tight spaces, sharp corners, turn-arounds, and side-to-side handling.

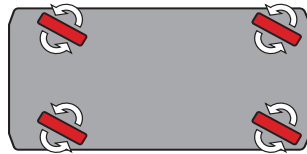
#### FIXED

Slide lever to the left for traditional fixed positioning



#### FULL-RANGE

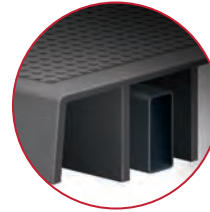
Slide lever to the right for full-range 360° maneuvering



Products are subject to change without notice; Dimensions, colors, and weight may vary from the actual product.

### KEY FEATURES STRUCTURAL FOAM

- With steel frame construction (material cutaway shown)
- Won't rust or chip and is resistant to denting and bending



### INTEGRATED BRAKES

- Holds cart in place for easy loading and unloading
- Conveniently located for easy application



### TIE-DOWNS

- Secure large items with integrated tie-downs
- Four tie-downs, two on each side



### SPRING LOADED STANCHIONS

- Spring loaded stanchion retainers eliminate accidental removal
- Six bar sockets and removable stanchions for optimal material handling



### DURABLE WHEELS

- Durable polyurethane-coated wheels for a smooth, non-marring quiet ride
- Polypropylene core
- Capacity up to 1,000 lbs



MODEL#	DIMENSIONS	CASTER	CAPACITY
PDST2436	24.26" W x 39.5" L x 43.5" H	POLYPROPYLENE CORE	1000 LBS
PDST2448	24.24" W x 51.5" L x 43.5" H	POLYPROPYLENE CORE	1000 LBS
PDST3060	30.27" W x 63.5" L x 43.5" H	POLYPROPYLENE CORE	1000 LBS

## TILT TRUCKS LIGHT, STANDARD AND HEAVY DUTY



RMTHD100 model shown



### KEY FEATURES ROTO-MOLDED MDPE

- Provides the ultimate durability (material cutaway shown)
- Won't rust or chip and resistant to denting and bending



### INDUSTRIAL STRENGTH CASTERS

- Available in 10, 12 and 14 inch
- Integrated brakes



### TOWABLE DESIGN

- Allows for connection of multiple units (compatible with only Standard or Heavy Duty Tilt Trucks 3/4 cubic yards and larger)



### FORKLIFTABLE FEATURE

- Standard on all Standard Duty and Heavy Duty models 1 cubic yard and larger



### 1/2 CUBIC YARD TILT TRUCK

SIZE: 28.27" W x 60.21" L x 36.11" H / LD  
 SIZE: 27.77" W x 59.21" L x 36.64" H / SD & HD  
 WEIGHT: 65 lbs LD / 90 lbs SD / 100 lbs HD

DURABILITY	MODEL#	WHEEL DIAMETER	CAPACITY
LIGHT DUTY	RMTTLD50	10"	650 LBS
STANDARD DUTY	RMTTSD50	10"	900 LBS
HEAVY DUTY	RMTHD50	10"	1400 LBS



### 3/4 CUBIC YARD TILT TRUCK

SIZE: 31" W x 69.3" L x 42.5" H / LD  
 SIZE: 30.7" W x 68.8" L x 43" H / SD  
 WEIGHT: 85 lbs LD / 110 lbs SD

DURABILITY	MODEL#	WHEEL DIAMETER	CAPACITY
LIGHT DUTY	RMTTLD75	10"	750 LBS
STANDARD DUTY	RMTTSD75	12"	1,400 LBS



### 1 CUBIC YARD TILT TRUCK

SIZE: 33.87" W x 70" L x 43.84" H / LD & SD  
 SIZE: 33.87" W x 70" L x 45.16" H / HD  
 WEIGHT: 105 lbs LD / 140 lbs SD / 156 lbs HD

DURABILITY	MODEL#	WHEEL DIAMETER	CAPACITY
LIGHT DUTY	RMTTLD100	10"	750 LBS
STANDARD DUTY	RMTTSD100	12"	1,400 LBS
HEAVY DUTY	RMTHD100	14"	2,300 LBS



### 1-1/2 CUBIC YARD TILT TRUCK

SIZE: 41.28" W x 85.87" L x 47.89" H / SD  
 SIZE: 41.28" W x 85.87" L x 49" H / HD  
 WEIGHT: 197 lbs SD / 205 lbs HD

DURABILITY	MODEL#	WHEEL DIAMETER	CAPACITY
STANDARD DUTY	RMTTSD150	12"	1,400 LBS
HEAVY DUTY	RMTHD150	14"	2,300 LBS



### 2 CUBIC YARD TILT TRUCK

SIZE: 47.4" W x 85.5" L x 50.5" H / SD  
 SIZE: 47.4" W x 85.5" L x 51" H / HD  
 WEIGHT: 245 lbs SD / 255 lbs HD

DURABILITY	MODEL#	WHEEL DIAMETER	CAPACITY
STANDARD DUTY	RMTTSD200	12"	1,400 LBS
HEAVY DUTY	RMTHD200	14"	2,300 LBS

Products are subject to change without notice; Dimensions, colors, and weight may vary from the actual product.

## OPTIONAL ACCESSORIES\*



### 1/2 CUBIC YARD LID

SIZE: 30.79" W x 57" L x 5.5" H  
WEIGHT: 10.6 lbs

MODEL#	
RMTT50LID	



### 1 CUBIC YARD LID

SIZE: 35.5" W x 68.5" L x 7" H  
WEIGHT: 17.5 lbs

MODEL#	
RMTT100LID	



### 3/4 CUBIC YARD LID

SIZE: 31.69" W x 67" L x 6.9" H  
WEIGHT: 14 lbs

MODEL#	
RMTT75LID	



### 1-1/2 CUBIC YARD LID

SIZE: 44.6" W x 86" L x 6.8" H  
WEIGHT: 45 lbs

MODEL#	
RMTT150LID	



### UTILITY BIN

FOR 1/2 AND 3/4  
CUBIC YARD MODELS  
SIZE: 12.78" W x 17.21" L x 10.63" H

MODEL#	CAPACITY
BIN17102	4 GALLONS



### TILT TRUCK TOW RACK

FOR STANDARD AND  
HEAVY DUTY MODELS  
SIZE: 10.75" W x 55" L x 3.25" H

MODEL#	
TTTOWRACKHD	

\*Optional accessories sold separately.

Products are subject to change without notice; Dimensions, colors, and weight may vary from the actual product.

## HEAVY DUTY UTILITY CART



PUCSD1937 model shown



### KEY FEATURES UTILITY SIDE RAIL

- Rail on outer edge of top platform provides more storage solutions
- Bins fit securely in rail for more versatile storage options



### DURABLE WHEELS

- Durable TPR-coated wheels for a smooth, non-marring quiet ride
- Polypropylene core
- Up to 85% stronger than our leading competitor



### CORD HOOK

- Keep cords and ropes organized for quick access



**SIZE: 19.5" W x 41.78" L x 34.81" H**  
**WEIGHT: 46.87 lbs**

MODEL#	CASTER	MAXIMUM CAPACITY
PUCSD1937	TPR 5" RIM	500 lbs*



**SIZE: 26.5" W x 48.78" L x 34.81" H**  
**WEIGHT: 57.47 lbs**

MODEL#	CASTER	MAXIMUM CAPACITY
PUCSD2645	TPR 5" RIM	500 lbs*



PUCSD2645 model shown

\*CAPACITY: 250 lbs per shelf. Products are subject to change without notice; Dimensions, colors, and weight may vary from the actual product.



## HEAVY DUTY PLUS UTILITY CART



PUCHD2654 model shown



3 position handle



**SIZE: 19.5" W x 41.78" L x 34.81" H**  
WEIGHT: 53.5 lbs

MODEL#	CASTER	MAXIMUM CAPACITY
PUCHD1937	POLYURETHANE 5" RIM	500 lbs*



**SIZE: 26.5" W x 48.78" L x 34.81" H**  
WEIGHT: 62.95 lbs

MODEL#	CASTER	MAXIMUM CAPACITY
PUCHD2645	POLYURETHANE 5" RIM	500 lbs*



**SIZE: 26.5" W x 58.78" L x 34.81" H**  
WEIGHT: 68.83 lbs

MODEL#	CASTER	MAXIMUM CAPACITY
PUCHD2654	POLYURETHANE 5" RIM	750 lbs*

\*CAPACITY: 250 lbs per shelf. 375 lbs per shelf for model PUCHD2654. Products are subject to change without notice; Dimensions, colors, and weight may vary from the actual product.

### 360° ADJUSTABLE CASTER SYSTEM



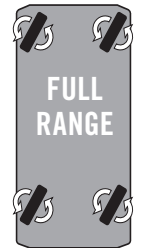
Innovative caster system allows for a fixed front caster mode, which keeps the utility cart straight when desired, or full-range 360° movement.

#### FIXED

Slide lever to the left for traditional fixed positioning.

#### FULL-RANGE

Slide lever to the right for full-range 360° maneuvering.



### KEY FEATURES CUSTOMIZABLE BIN SYSTEM



- Optimize storage strategies with 6 movable bins
- Bins sit securely in grooves or the upper utility rail of the cart

### UTILITY SIDE RAIL



- Rail on outer edge of top platform provides more storage solutions
- Bins fit securely in rail for more versatile storage options

### DURABLE WHEELS



- Durable polyurethane-coated wheels for a smooth, non-marring quiet ride
- Polypropylene core
- Up to 85% stronger than our leading competitor



PUCHD2645 model shown

## PNEUMATIC PLUS UTILITY CART



PUCPN2654 model shown



3 position handle



**SIZE: 19.5" W x 41.78" L x 38.76" H**  
WEIGHT: 67 lbs

MODEL#	CASTER	MAXIMUM CAPACITY
PUCPN1937	8.6" PNEUMATIC	500 lbs*



**SIZE: 26.5" W x 48.78" L x 38.74" H**  
WEIGHT: 77 lbs

MODEL#	CASTER	MAXIMUM CAPACITY
PUCPN2645	8.6" PNEUMATIC	500 lbs*



**SIZE: 26.5" W x 58.78" L x 38.75" H**  
WEIGHT: 87 lbs

MODEL#	CASTER	MAXIMUM CAPACITY
PUCPN2654	8.6" PNEUMATIC	750 lbs*

\*CAPACITY: 250 lbs per shelf. 375 lbs per shelf for model PUCPN2654. Products are subject to change without notice; Dimensions, colors, and weight may vary from the actual product.

### 360° ADJUSTABLE CASTER SYSTEM



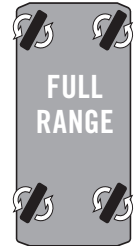
Innovative caster system allows for a fixed front caster mode, which keeps the utility cart straight when desired, or full-range 360° movement.

#### FIXED

Slide lever to the left for traditional fixed positioning.

#### FULL-RANGE

Slide lever to the right for full-range 360° maneuvering.



### KEY FEATURES PNEUMATIC CASTERS

- Four 8.6" pneumatic casters provide smooth shock-resistant transportation over uneven surfaces



### CUSTOMIZABLE BIN SYSTEM

- Optimize storage strategies with 6 movable bins
- Bins sit securely in grooves or the upper utility rail of the cart



### UTILITY SIDE RAIL

- Rail on outer edge of top platform provides more storage solutions
- Bins fit securely in rail for more versatile storage options

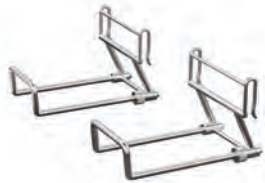
## OPTIONAL ACCESSORIES\*



### CUSTOMIZABLE BIN SYSTEM

SMALL BIN SIZE: 3.98" W x 5.63" L x 3.90" H  
LARGE BIN SIZE: 4.38" W x 18.44" L x 3.90" H

<b>MODEL#</b>	PUCBIN6
---------------	---------



### LADDER HOOK

SIZE: 5.70" W x 4.86" H  
Extends to 6"

<b>MODEL#</b>	PUCLH2
---------------	--------

- 2 hooks included
- Holds 12 lbs per hook



### UTILITY BIN

SIZE: 12.78" W x 17.21" L x 10.63" H

<b>MODEL#</b>	<b>CAPACITY</b>
BIN17102	4 GALLONS



### WASTE BIN

SIZE: 12.78" W x 17.21" L x 22.13" H

<b>MODEL#</b>	<b>CAPACITY</b>
BIN17222	8 GALLONS



\*Optional accessories sold separately.

Products are subject to change without notice; Dimensions, colors, and weight may vary from the actual product.

## SERVICE CART



RC2040 model shown

### KEY FEATURES HEAVY DUTY

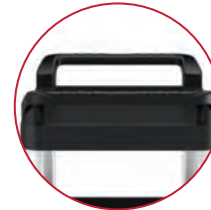
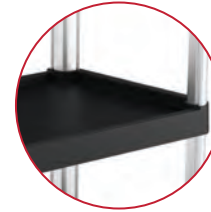
- 300 lbs capacity (RC2030 and RC2040 100 lbs per shelf. RC4S2040 75 lbs per shelf)

### FLOOR AND WALL PROTECTION

- 4 non-marring casters protect floors
- Rounded corners on each side help protect walls

### ERGONOMIC HANDLE

- Dual ergonomic rounded push handles



### ADDITIONAL FEATURES

- Smooth shelf surface is easy to clean
- Perfect for schools, hotels, and restaurants



SIZE: 20" W x 34" L x 37.92" H

MODEL#	CASTER	MAXIMUM CAPACITY
RC2030	TPR	300 lbs*



SIZE: 20" W x 39.85" L x 38.17" H

MODEL#	CASTER	MAXIMUM CAPACITY
RC2040	TPR	300 lbs*



SIZE: 20" W x 39.85" L x 51.80" H

MODEL#	CASTER	MAXIMUM CAPACITY
RC4S2040	TPR	300 lbs*

\*CAPACITY: RC2030 and RC2040 100 lbs per shelf. RC4S2040 75 lbs per shelf. Products are subject to change without notice; Dimensions, colors, and weight may vary from the actual product.

## OPTIONAL ACCESSORIES\*

### UTILITY BIN

SIZE: 12.78" W x 17.21" L x 10.63" H



MODEL#	CAPACITY
BIN17102	4 GALLONS

### WASTE BIN

SIZE: 12.78" W x 17.21" L x 22.13" H



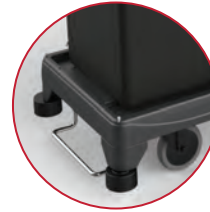
MODEL#	CAPACITY
BIN17222	8 GALLONS

\*Optional accessories sold separately.

## AVAILABLE MAY, 2019 COMPACT CLEANING CARTS



CCH200 model shown



### COMMON FEATURES NON-MARRING BUMPER

- Bumper designed to reduce costly wall damage



### INTERIOR STORAGE

- 2 adjustable shelves for customized storage



### FOLDING HANDLE

- Handles fold up to help reduce space when cart is not in use



### ONE STANDARD BAG INCLUDED

- Spacious interior for collecting laundry or refuse



	CLEANING CART	HIGH-SECURITY CLEANING CART	SUB-COMPACT STANDARD CART	SUB-COMPACT PREMIUM CART	COMPACT HKC STANDARD CART	COMPACT HKC PREMIUM CART
End item	CC200	CCH250	CCT100	CCH200	HKCCT100	HKCCH200
Long handle tool rack	✓	✓	✓	✓		
Three sided tray			✓		✓	
Lockable hood		✓		✓		✓
Large bin	✓	✓		✓		✓
Small bin (2-pack)	✓	✓				
Vacuum wire/strap			✓	✓	✓	✓
Lockable front door		✓		✓		✓
Back panel		✓	✓	✓	✓	✓
Sign hooks	✓	✓	✓	✓		
Mop wire			✓	✓		
Charging bucket wire		✓				
4 Rollers			✓	✓		
2 Rollers/wall glides	✓	✓			✓	✓

## NEW CLEANING CARTS



CC200 model shown



CCH250 model shown



### KEY FEATURES NON-MARRING BUMPER

- Bumper designed to reduce costly wall damage



### INTERIOR STORAGE

- 2 adjustable shelves for customized storage



### FOLDING HANDLE

- Handles fold up to help reduce space when cart is not in use



### ONE STANDARD BAG INCLUDED

- Spacious interior for collecting laundry or refuse



### LONG-HANDLE TOOL RACK

- Long-handle tool storage on all four sides
- Holder also doubles as hanging rack for spray bottles

## ADDITIONAL FEATURES

### CLEANING CART

SIZE: 23.25" W x 44.39" H x 53.16" L

MODEL#	COLOR
CC200	BLACK

- Large bin
- Small bin (2-pack)
- Sign hooks
- 2 rollers/wall glides

### HIGH-SECURITY CLEANING CART

SIZE: 23.19" W x 53.02" H x 53.23" L

MODEL#	COLOR
CCH250	BLACK

- Lockable hood
- Large bin
- Small bin (2-pack)
- Lockable front door
- Back Panel
- Sign hooks
- Charging bucket wire
- 2 rollers/wall glides

## NEW SUB-COMPACT CARTS



CCT100 model shown



CCH200 model shown



### KEY FEATURES NON-MARRING BUMPER

- Bumper designed to reduce costly wall damage



### INTERIOR STORAGE

- 2 adjustable shelves for customized storage



### ONE STANDARD BAG INCLUDED

- Spacious interior for collecting laundry or refuse



### LONG-HANDLE TOOL RACK

- Long-handle tool storage on all four sides
- Holder also doubles as hanging rack for spray bottles

## ADDITIONAL FEATURES

### SUB-COMPACT STANDARD CART

SIZE: 23.25" W x 46.59" H x 43.41" L

MODEL#	COLOR
CCT100	BLACK ●

- Three sided tray
- Vacuum wire/strap
- Back panel
- Sign hooks
- Mop wire
- 4 rollers

### SUB-COMPACT PREMIUM CART

SIZE: 23.25" W x 53.04" H x 43.43" L

MODEL#	COLOR
CCT200	BLACK ●

- Lockable hood
- Large bin
- Vacuum wire/strap
- Back Panel
- Sign hooks
- Mop wire
- 4 rollers

## NEW COMPACT CARTS



HKCCT100 model shown



HKCCH200 model shown



### KEY FEATURES NON-MARRING BUMPER

- Bumper designed to reduce costly wall damage
- 2 wall glides



### INTERIOR STORAGE

- 2 adjustable shelves for customized storage



### FOLDING HANDLE

- Handles fold up to help reduce space when cart is not in use



### ONE STANDARD BAG INCLUDED

- Spacious interior for collecting laundry or refuse

## ADDITIONAL FEATURES

### COMPACT HKC STANDARD CART

SIZE: 23.25" W x 46.57" H x 53.18" L

MODEL#	COLOR
HKCCT100	BLACK ●

- Three sided tray
- Vacuum wire/strap
- Back panel
- 2 rollers/wall guides

### COMPACT HKC PREMIUM CART

SIZE: 23.25" W x 53.06" H x 53.22" L

MODEL#	COLOR
HKCCH200	BLACK ●

- Lockable hood
- Large bin
- Vacuum wire/strap
- Lockable front door
- Back Panel
- 2 rollers/wall guides



## HOUSEKEEPING CARTS



HKC2000 model

**ONLY FROM**  
SUNCAST  
COMMERCIAL

### 360° ADJUSTABLE CASTER SYSTEM

Innovative caster system allows for a fixed front caster mode, which keeps the housekeeping cart straight when desired, or full-range 360° movement, perfect for tight spaces, sharp corners, turn-arounds, and side-to-side handling.



Slide lever to the left for traditional fixed positioning



Slide lever to the right for full-range 360° maneuvering



### KEY FEATURES IMPACT-ABSORBING BUMPERS

- Low bottom roller hits base board
- 3 Standard spring-loaded non-marring bumpers at each corner for HKC2000, HCK1500, HCK1550 and HCK1550PN models
- 1 Standard non-marring bumper at each corner for the HKC1000 model



### LONG-HANDLE TOOL STORAGE

- Long-handle tool storage on all four sides
- Holder also doubles as hanging rack for spray bottles



### STANDARD BAG INCLUDED

- Spacious interior for collecting laundry or refuse
- Secure side zipper allows easy removal of contents
- One HKCBAG05 included with each cart




	PREMIUM HKC2000	PLATINUM PNEUMATIC HCK1550PN	STANDARD PLUS HCK1500	PLATINUM STANDARD PLUS HCK1550	STANDARD HCK1000
360 Adjustable caster system	✓				
Shock-resistant pneumatic casters		✓			
3 Spring-loaded non-marring bumpers at each corner	✓	✓	✓	✓	
Standard housekeeping bag included	✓	✓	✓	✓	✓
Long handle tool storage	✓	✓	✓	✓	✓
2 Heavy duty vacuum straps included	✓	✓	✓	✓	✓
1 Non-marring bumper at each corner					✓
Dimensions	62.13" L x 24" W x 49.75" H	62.13" L x 24" W x 49.75" H	62.13" L x 24" W x 49.38" H	62.13" L x 24" W x 49.75" H	62.13" L x 24" W x 49.75" H
Weight	114 LBS	110 LBS	119 LBS	119 LBS	107.5 LBS
Color	Black ●	Platinum ●	Black ●	Platinum ●	Black ●

## PREMIUM HOUSEKEEPING CART PARTIALLY ASSEMBLED



62.13" L x 24" W x 49.75" H  
WEIGHT: 114 lbs

MODEL#	COLOR
HKC2002	BLACK 



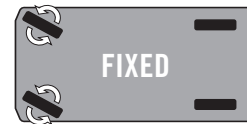
62.13" L x 24" W x 49.75" H  
WEIGHT: 114 lbs

MODEL#	COLOR
HKC2052	PLATINUM 

### 360° ADJUSTABLE CASTER SYSTEM



Innovative caster system allows for a fixed front caster mode, which keeps the housekeeping cart straight when desired, or full-range 360° movement, perfect for tight spaces, sharp corners, turn-arounds, and side-to-side handling.



Slide lever to the left for traditional fixed positioning



Slide lever to the right for full-range 360° maneuvering

### KEY FEATURES IMPACT-ABSORBING BUMPERS



- Spring-loaded to reduce costly wall damage
- Low bottom roller hits base board

### LONG-HANDLE TOOL STORAGE



- Long-handle tool storage on all four sides
- Holder also doubles as hanging rack for spray bottles

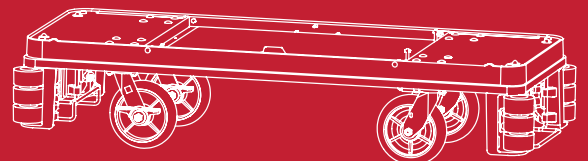
### STANDARD BAG INCLUDED



- Spacious interior for collecting laundry or refuse
- Secure side zipper allows easy removal of contents
- One HKCBAG05 included with each cart

### PARTIALLY ASSEMBLED TO SAVE INSTALLATION TIME

Triple Corner Rollers, Vacuum Support Bars, Lower Swivel Locking Mechanism and Casters are pre-assembled for your convenience.



\*Products are subject to change without notice; Dimensions, colors, and weight may vary from the actual product.

## OPTIONAL ACCESSORIES\*



### LOCKABLE HOOD HKCHOOD

- Lockable to protect supplies
- Ridges on top for added strength (holds up to 10 lbs evenly distributed)



### LOCKABLE DOORS HKCBMDOOR

- Durable resin doors and handles
- Lockable to protect supplies



### LOCKABLE SLIDE DRAWER WITH DIVIDERS HKCDRW2

- Includes 6 dividers for customized organization



### ADJUSTABLE SHELF

- Easily locks into place
- Can be attached in 3 different positions

MODEL#	COLOR
HKCSHELF	BLACK ●
HKCSHELFP	PLATINUM ●



### CARRY CADDY HKCCADDYD

- Increased depth to accommodate spray bottles
- Caddy can nest on both sides of the cart



### TOILET BRUSH CADDY HKCTBKIT

- Includes one caddy, one toilet brush and one toilet brush holder
- Discreetly stores toilet bowl brush when not in use
- Increased depth to accommodate spray bottles
- Helps keep contaminants separated from non-contaminated objects

## ADDITIONAL BAG OPTIONS\*



### AMENITY BAG HKCBAG01D

- Spacious exterior pocket attached to main bag
- Perfect for collecting and organizing unused amenities



### DIVIDED BAG HKCBAG02D

- Middle liner separating bag into two compartments
- Useful for organizing different contents for more convenient clean up



### 3-SIDED HANGING BAG WITH SHELVES HKCBAG03D

- Equipped with 3 spacious shelves for more versatile storage solutions
- Exterior pockets perfect for conveniently storing smaller objects



### 8-POCKET ORGANIZER HKCBAG04D

- 8 exterior pockets for smaller tools and accessories



### STANDARD BAG HKCBAG05D

- Spacious interior for collecting laundry or refuse
- Secure side zipper allows easy removal of contents

\*Optional accessories and additional bag options sold separately. Products are subject to change without notice; Dimensions, colors, and weight may vary from the actual product.

## JOB BOXES



BMJBCPD4824 model shown



### 48" JOB BOX

SIZE: 48" W x 25" D x 24" H  
CAPACITY: 100 gal  
WEIGHT: 56.17 lbs

MODEL#	COLOR
BMJBCPD4824	BLACK ●



### 48" JOB BOX WITH FORKLIFT SYSTEM

SIZE: 48" W x 25.75" D x 32.77" H  
CAPACITY: 100 gal  
WEIGHT: 85 lbs

MODEL#	COLOR
BMJB4824FL	BLACK ●



### 48" JOB BOX WITH FORKLIFT AND CASTER SYSTEM

SIZE: 48" W x 25.75" D x 37" H  
CAPACITY: 100 gal  
WEIGHT: 107 lbs

MODEL#	COLOR
BMJB4824FLC	BLACK ●



### KEY FEATURES GAS STRUTS

- Provide one handle easy lift and open lid support



### LOCKABLE

- Two nickel-plated steel draw latches (locks not included)



### WEATHER RESISTANT

- Automotive-grade weather seal



### DURABLE RESIN

- Won't bend, rust, scratch, or dent (material cutaway shown)



### HEAVY-DUTY STEEL HANDLES

- For easy two-person lift

### ADDITIONAL FEATURES

- Full size for 100 gallon equivalent storage
- Half the weight of metal—easier to move
- Fits between wheel wells in the bed of a full-size truck
- Fully secured with metal reinforcements

Products are subject to change without notice; Dimensions, colors, and weight may vary from the actual product.

## RESIN STORAGE CABINETS WALL, BASE, TALL AND MEGA-TALL



BMCCPD8004 model shown



### KEY FEATURES METAL-REINFORCED SHELVING

- Safely stores up to 200 lbs (50 lbs for Wall Storage Cabinet)



### MULTI-WALL RESIN PANELS

- Resist dents, scratches, and rust
- Engineered for added strength and stability



### UPPER AND LOWER LATCHES

- Provide additional unit security (lower latch only on Base, Tall and Mega-Tall Storage Cabinets; not included on Wall Storage Cabinet)

### ADDITIONAL FEATURES

- Padlock-ready doors (padlock not included)



### WALL STORAGE CABINET

SIZE: 30" W x 12" D x 30.25" H  
WEIGHT: 31 LBS  
CAPACITY: 4 CU FT  
SHELF WEIGHT: 50 LBS

MODEL#	COLOR
BMCCPD3000	GRAY ●



### BASE STORAGE CABINET

SIZE: 30" W x 20.25" D x 36" H  
WEIGHT: 42.66 LBS  
CAPACITY: 9 CU FT  
SHELF WEIGHT: 200 LBS

MODEL#	COLOR
BMCCPD3600	GRAY ●



### TALL STORAGE CABINET 4-SHELF

SIZE: 30" W x 20.25" D x 72" H  
WEIGHT: 77.8 LBS  
CAPACITY: 19 CU FT  
SHELF WEIGHT: 200 LBS

MODEL#	COLOR
BMCCPD7204	GRAY ●

### TALL STORAGE CABINET 6-SHELF

SIZE: 30" W x 20.25" D x 72" H  
WEIGHT: 85.8 LBS  
CAPACITY: 19 CU FT  
SHELF WEIGHT: 200 LBS

MODEL#	COLOR
BMCCPD7206	GRAY ●



### MEGA-TALL STORAGE CABINET 4-SHELF

SIZE: 40" W x 20.25" D x 80.25" H  
WEIGHT: 105.2 LBS  
CAPACITY: 31 CU FT  
SHELF WEIGHT: 200 LBS

MODEL#	COLOR
BMCCPD8004	GRAY ●

### MEGA-TALL STORAGE CABINET 6-SHELF

SIZE: 40" W x 20.25" D x 80.25" H  
WEIGHT: 119.5 LBS  
CAPACITY: 31 CU FT  
SHELF WEIGHT: 200 LBS

MODEL#	COLOR
BMCCPD8006	GRAY ●

Products are subject to change without notice; Dimensions, colors, and weight may vary from the actual product.

## RESIN LUMBER BENCHES



### KEY FEATURES INNOVATIVE DESIGN

- Maintenance-free: will not rot, corrode, decay or splinter
- UV inhibitors prevent color fading and never needs to be sealed, stained, or painted
- Resistant to moisture and scratching in any weather condition



### DURABILITY

- Heavily braced to prevent sagging
- Powder-coated structural metal frames are rust resistant (not included on resin frame benches)

### ADDITIONAL FEATURES

- Easy to assemble
- Maximum comfort seating



PLAB6C shown

### DESIGNER BENCH WITH RESIN FRAME

#### 4' RESIN BENCH

SIZE: 48" L x 25" W x 33" H  
WEIGHT: 109 lbs

MODEL#	COLOR
PLAB4C	CEDAR
PLAB4G	GREEN

#### 6' RESIN BENCH

SIZE: 72" L x 25" W x 33" H  
WEIGHT: 155 lbs

MODEL#	COLOR
PLAB6C	CEDAR
PLAB6G	GREEN
PLAB6R	WEATHERED REDWOOD



PLCPB6C shown

### TRAILSIDE BENCH WITH RESIN FRAME

#### 4' RESIN BENCH

SIZE: 48" L x 25" W x 32" H  
WEIGHT: 85 lbs

MODEL#	COLOR
PLCPB4C	CEDAR
PLCPB4GY	GRAY
PLCPB4G	GREEN

#### 6' RESIN BENCH

SIZE: 72" L x 25" W x 32" H  
WEIGHT: 128 lbs

MODEL#	COLOR
PLCPB6C	CEDAR
PLCPB6GY	GRAY
PLCPB6G	GREEN

#### 8' RESIN BENCH

SIZE: 96" L x 25" W x 32" H  
WEIGHT: 121 lbs

MODEL#	COLOR
PLCPB8C	CEDAR
PLCPB8GY	GRAY
PLCPB8G	GREEN



PLSB6C shown

### SPORT BENCH WITH RESIN FRAME

#### 4' RESIN BENCH

SIZE: 48" L x 19.5" W x 20" H  
WEIGHT: 65 lbs

MODEL#	COLOR
PLSB4C	CEDAR

#### 6' RESIN BENCH

SIZE: 72" L x 19.5" W x 20" H  
WEIGHT: 89 lbs

MODEL#	COLOR
PLSB6GY	GRAY
PLSB6G	GREEN

#### 8' RESIN BENCH

SIZE: 96" L x 19.5" W x 20" H  
WEIGHT: 121 lbs

MODEL#	COLOR
PLSB8C	CEDAR
PLSB8GY	GRAY

\*Products are subject to change without notice; Dimensions, colors, and weight may vary from the actual product.



PLCBS6C shown

## URBAN SURFACE MOUNT BENCH WITH METAL FRAME

### 4' RESIN BENCH

SIZE: 48" L x 22.5" W x 31.2" H  
WEIGHT: 110 lbs

MODEL#	COLOR
PLCBS4C	CEDAR
PLCBS4GY	GRAY
PLCBS4G	GREEN
PLCBS4W	WHITE
PLCBS4B	BLACK

### 6' RESIN BENCH

SIZE: 72" L x 22.5" W x 31.2" H  
WEIGHT: 160 lbs

MODEL#	COLOR
PLCBS6C	CEDAR
PLCBS6GY	GRAY
PLCBS6G	GREEN
PLCBS6W	WHITE
PLCBS6B	BLACK

### 8' RESIN BENCH

SIZE: 96" L x 22.5" W x 31.2" H  
WEIGHT: 210 lbs

MODEL#	COLOR
PLCBS8C	CEDAR
PLCBS8GY	GRAY
PLCBS8G	GREEN
PLCBS8W	WHITE



PLCBG6C shown

## URBAN IN GROUND BENCH WITH METAL FRAME

### 4' RESIN BENCH

SIZE: 48" L x 22.5" W x 31.2" H  
WEIGHT: 110 lbs

MODEL#	COLOR
PLCBG4C	CEDAR
PLCBG4GY	GRAY
PLCBG4G	GREEN
PLCBG4W	WHITE

### 6' RESIN BENCH

SIZE: 72" L x 22.5" W x 31.2" H  
WEIGHT: 160 lbs

MODEL#	COLOR
PLCBG6C	CEDAR
PLCBG6GY	GRAY
PLCBG6G	GREEN
PLCBG6W	WHITE
PLCBG6B	BLACK

### 8' RESIN BENCH

SIZE: 96" L x 21.5" W x 31.2" H  
WEIGHT: 210 lbs

MODEL#	COLOR
PLCBG8C	CEDAR
PLCBG8GY	GRAY
PLCBG8G	GREEN
PLCBG8W	WHITE



PLGB6C shown

## GARDEN BENCH WITH METAL FRAME

### 4' RESIN BENCH

SIZE: 47.3" L x 25.3" W x 28.86" H  
WEIGHT: 145 lbs

MODEL#	COLOR
PLGB4C	CEDAR
PLGB4BR	BROWN
PLGB4GY	GRAY
PLGB4G	GREEN
PLGB4R	WEATHERED REDWOOD

### 6' RESIN BENCH

SIZE: 71.3" L x 25.3" W x 28.9" H  
WEIGHT: 194 lbs

MODEL#	COLOR
PLGB6C	CEDAR
PLGB6BR	BROWN
PLGB6GY	GRAY
PLGB6G	GREEN
PLGB6R	WEATHERED REDWOOD

### 8' RESIN BENCH

SIZE: 95.3" L x 25.3" W x 28.9" H  
WEIGHT: 243 lbs

MODEL#	COLOR
PLGB8C	CEDAR
PLGB8BR	BROWN



PLHB6C shown

## PARK BENCH WITH METAL FRAME

### 4' RESIN BENCH

SIZE: 48.3" L x 24.9" W x 29.9" H  
WEIGHT: 125 lbs

MODEL#	BENCH COLOR	FRAME COLOR
PLHB4C	CEDAR	BLACK
PLHB4CGF	CEDAR	GREEN
PLHB4GY	GRAY	BLACK

### 5' RESIN BENCH

SIZE: 60.3" L x 24.9" W x 29.9" H  
WEIGHT: 145 lbs

MODEL#	BENCH COLOR	FRAME COLOR
PLHB5C	CEDAR	BLACK
PLHB5CGF	CEDAR	GREEN

### 6' RESIN BENCH

SIZE: 72.3" L x 24.9" W x 29.9" H  
WEIGHT: 175 lbs

MODEL#	BENCH COLOR	FRAME COLOR
PLHB6C	CEDAR	BLACK
PLHB6CGF	CEDAR	GREEN
PLHB6GY	GRAY	BLACK
PLHB6GYG	GRAY	GREEN
PLHB6B	BLACK	BLACK



PLHBB6C shown

## BACKLESS BENCH WITH METAL FRAME

### 4' RESIN BENCH

SIZE: 48.3" L x 21.4" W x 17.0" H  
WEIGHT: 100 lbs

MODEL#	BENCH COLOR	FRAME COLOR
PLHBB4C	CEDAR	BLACK
PLHBB4CGF	CEDAR	GREEN
PLHBB4GGF	GREEN	GREEN
PLHBB4G	GREEN	BLACK
PLHBB4B	BLACK	BLACK

### 6' RESIN BENCH

SIZE: 72.3" L x 21.4" W x 17.0" H  
WEIGHT: 120 lbs

MODEL#	BENCH COLOR	FRAME COLOR
PLHBB6C	CEDAR	BLACK
PLHBB6GGF	GREEN	GREEN
PLHBB6G	GREEN	BLACK

### 8' RESIN BENCH

SIZE: 96.3" L x 21.4" W x 17.0" H  
WEIGHT: 145 lbs

MODEL#	BENCH COLOR	FRAME COLOR
PLHBB8C	CEDAR	BLACK

\* Products are subject to change without notice; Dimensions, colors, and weight may vary from the actual product.

## RESIN LUMBER TABLES



PLPT6BKC shown



### KEY FEATURES INNOVATIVE DESIGN

- Maintenance-free: will not rot, corrode, decay or splinter
- UV inhibitors prevent color fading and never needs to be sealed, stained, or painted
- Resistant to moisture and scratching in any weather condition



### DURABILITY

- Heavily braced to prevent sagging
- Powder-coated structural metal frames are rust resistant (not included on resin frame benches)

### ADDITIONAL FEATURES

- Easy to assemble
- Maximum comfort seating



PLPT6BKC shown

### PICNIC TABLE WITH RESIN FRAME

#### 6' RESIN TABLE

SIZE: 58" W x 72" L x 32.5" H  
WEIGHT: 289 lbs

MODEL#	TABLE COLOR	FRAME COLOR
PLPT6BKC	CEDAR ●	BLACK ●
PLPT6BRC	CEDAR ●	BROWN ●
PLPT6CBR	BROWN ●	CEDAR ●
PLPT6BK	BLACK ●	BLACK ●
PLPT6BKGR	GREEN ●	BLACK ●
PLPT6GRC	CEDAR ●	GREEN ●
PLPT6BR	BROWN ●	BROWN ●

#### 6' RESIN TABLE CONTINUED

MODEL#	TABLE COLOR	FRAME COLOR
PLPT6CBK	BLACK ●	CEDAR ●
PLPT6BKGY	GRAY ●	BLACK ●
PLPT6GRGY	GRAY ●	GREEN ●
PLPT6CC	CEDAR ●	CEDAR ●
PLPT6BKBR	BROWN ●	BLACK ●
PLPT6GRBR	BROWN ●	GREEN ●

#### 8' RESIN TABLE

SIZE: 58" W x 96" L x 32.5" H  
WEIGHT: 349 lbs

MODEL#	TABLE COLOR	FRAME COLOR
PLPT8BKC	CEDAR ●	BLACK ●
PLPT8BRC	CEDAR ●	BROWN ●
PLPT8CBR	BROWN ●	CEDAR ●
PLPT8BK	BLACK ●	BLACK ●
PLPT8BKGR	GREEN ●	BLACK ●
PLPT8BR	BROWN ●	BROWN ●
PLPT8BRBK	BLACK ●	BROWN ●
PLPT8GRC	GREEN ●	CEDAR ●

### SQUARE PICNIC TABLE WITH METAL FRAME

#### 4' RESIN TABLE

SIZE: 80" W x 80" L x 29.25" H  
WEIGHT: 300 lbs

MODEL#	COLOR
PLPTSQC	CEDAR ●
PLPTSQGY	GRAY ●
PLPTSQG	GREEN ●



PLPTSQC shown

\*Products are subject to change without notice; Dimensions, colors, and weight may vary from the actual product.






PLPTTC shown

## T-TABLE WITH METAL FRAME

### 4' RESIN TABLE

SIZE: 80" W x 80" L x 30" H  
WEIGHT: 265 lbs

MODEL#	COLOR
PLPTTC	CEDAR 






PLPTTADAC shown  
(Wheelchair accessible)

## T-TABLE ADA WITH METAL FRAME

### 4' RESIN TABLE

SIZE: 62.75" W x 80" L x 30" H  
WEIGHT: 231 lbs

MODEL#	COLOR
PLPTTADAC	CEDAR 
PLPTTADAB	BLACK 
PLPTTADAGY	GRAY 





PLPTEX6C shown

## HEXAGON TABLE WITH RESIN FRAME

### 6' RESIN TABLE

SIZE: 84" W x 84" L x 32" H  
WEIGHT: 250 lbs

MODEL#	COLOR
PLPTEX6C	CEDAR 
PLPTEX6G	GREEN 





PLPTEXADA6C shown  
(Wheelchair accessible)

## HEXAGON TABLE ADA WITH RESIN FRAME

### 6' RESIN TABLE

SIZE: 68" W x 84" L x 32" H  
WEIGHT: 206 lbs

MODEL#	COLOR
PLPTEXADA6C	CEDAR 
PLPTEXADA6G	GREEN 

\*Products are subject to change without notice; Dimensions, colors, and weight may vary from the actual product.

## RESIN LUMBER ADIRONDACK CHAIRS AND SIDE TABLES



PLAC3240GC shown



PLST22GC shown



### KEY FEATURES INNOVATIVE DESIGN

- Maintenance-free: will not rot, corrode, decay or splinter
- UV inhibitors prevent color fading and never needs to be sealed, stained, or painted
- Resistant to moisture and scratching in any weather condition



### DURABILITY

- Heavily braced to prevent sagging

### ADDITIONAL FEATURES

- Easy to assemble
- Maximum comfort seating

### RESIN CHAIR

SIZE: 32" W x 32" L x 40" H  
SEAT: 21" W x 20" D x 15" H  
WEIGHT: 45 lbs

MODEL#	COLOR
PLAC3240GC	CEDAR
PLAC3240BL	BLUE
PLAC3240G	GREEN
PLAC3240W	WHITE



### RESIN SIDE TABLE

SIZE: 22" Round x 20" H  
WEIGHT: 19 lbs

MODEL#	COLOR
PLST22GC	CEDAR
PLST22BL	BLUE
PLST22G	GREEN
PLST22W	WHITE

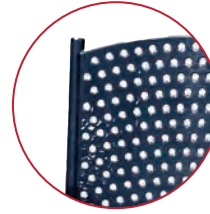


\*Products are subject to change without notice; Dimensions, colors, and weight may vary from the actual product.

## METAL SEATING

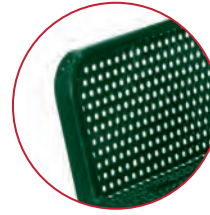


BMCCCPD1800 model shown



### KEY FEATURES PERFORATED METAL CONSTRUCTION

- For use indoors and outdoors



### THERMOPLASTIC COATING

- Abrasion resistant
- Anti-fungus
- Corrosion resistant
- Impact resistant
- Long lasting-won't fade, chip crack or peel



### SPLIT BENCH PICNIC TABLE

SIZE: 79.21" W x 81" L x 29.44" H  
WEIGHT: 430 LBS  
ALSO AVAILABLE IN A BACKLESS MODEL

MODEL#	COLOR
MPTPLC8101G	GREEN
MPTPLC8101B	BLUE



### METAL STOOL CHAIR PERFORATED 42" H

SIZE: 17" W x 42" H  
WEIGHT: 65 LBS

MODEL#	COLOR
MCPLC42	16 COLORS



### METAL PEDESTAL TABLE PERFORATED 36" X 40"

SIZE: 36" W x 40" H  
WEIGHT: 100 LBS

MODEL#	COLOR
MTPPLC3640	16 COLORS



### METAL DIAMOND CUSTOM LOGO BENCH 60"

SIZE: 25" W x 60" L x 33.12" H  
WEIGHT: 266 LBS

MODEL#	COLOR
MBDLC60P	16 COLORS

#### 16 AVAILABLE COLORS

BLACK	
RED	
ORANGE	
YELLOW	

GREEN	
BLACK GREEN	
TEAL	
BLUE	

NAVY	
PURPLE	
BURGUNDY	
BROWN	

BEIGE	
SANDSTONE	
GRAY	
GRANITE	

Products are subject to change without notice; Dimensions, colors, and weight may vary from the actual product.  
FOR A COMPLETE OFFERING OF OUR METAL PRODUCTS, PLEASE CALL 1.844.477.1260

## 6 FT. FOLDING PICNIC TABLE



### KEY FEATURES INNOVATIVE DESIGN

- Allows the bench seats to move up and create a larger table surface when desired
- Expanded table setting provides an additional 18 inches of space on top

### DURABILITY

- Durable blow molded resin design provides a classic style is easy to maintain
- Powder coated frame resists rust

### EASY STORAGE

- Entire unit can fold down for storage

### ADDITIONAL FEATURES

- Comfortably sits six people
- Ships assembled

### MULTIPLE CONFIGURATIONS

Six foot folding picnic table converts into multiple configurations to solve many entertaining needs. Table also folds to 4-1/2 inches flat for convenient storage.



One seat up

MODEL#	COLOR
BMPT7231	PLATINUM



Two seats up

PRODUCT DETAILS	
Overall Dimensions	4' 8" W x 6' L x 2' 5-1/4" H
Dimensions Folded	4' 6" W x 6' L x 4-1/2" H
Table Top Dimensions	2' 7" W x 6' L
Seat Dimensions	5' 8-1/2" L x 1' 7-3/4" H
Overall Weight	100 lbs
Table Weight Capacity	200 lbs
Seat Weight Capacity	400 lbs (200 lbs each seat)

\*Products are subject to change without notice; Dimensions, colors, and weight may vary from the actual product.

## SWIMMING POOL HOSE REEL



SIZE: 28.39" W x 20.35" D x 32.64" H  
WEIGHT: 16.1 lbs

MODEL#	COLOR
CPDSFB220W	WHITE <input type="radio"/>



### KEY FEATURES HOSE STORAGE

- Holds up to 40 ft of 1 ½" pool vacuum hose



### TRANSPORT

- Convenient resin wheels for easy mobility



### EASY WINDING

- Handle crank for easy winding
- Hose clips to hold end of vacuum hose for winding

### ADDITIONAL FEATURES

- Fold down handle for storage
- No assembly required



\*Products are subject to change without notice; Dimensions, colors, and weight may vary from the actual product.

