



INDUSTRIAL *Hand Care Program*



**TRUSTED
PERFORMANCE.
SUPERIOR
VALUE.**

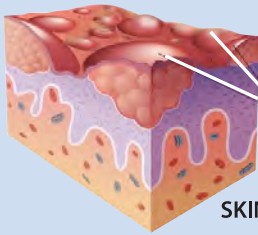


*Heavy Duty Hand Cleaners,
Hand Wipes & Hand Creams*

In industrial environments your hard workers' hands can take a beating. They can be exposed to many tough, industrial soils and other chemicals while on the job. It's important to help protect and prepare your employees from these conditions by providing personal protective equipment and skin care solutions to help keep your workers' skin clean and healthy. That's why Kutol offers a 3-Step Hand Care Program to help prepare, clean and restore dirty dry hands.



DERMATITIS



Inflamed Skin Surface

SKIN CUT-AWAY

Worker Skin Health

Occupational Dermatitis, the most prevalent industrial skin disease, is the inflammation of the skin caused by contact with damaging substances such as solvents, chemicals, irritants or sensitizers (allergens). Soreness, redness, and intense itching occur. In work environments where there is risk of exposure, proper skin care products should be used.

Workers should use protective gloves when necessary and wash their hands regularly, including before and after wearing gloves. Special hand creams, applied before and after work, help maintain proper skin condition. **The combination of cleansing hands and applying hand creams helps reduce the risk of occupational dermatitis.**

Kutol® Pro 3-Step Hand Care Program

STEP 1 PREPARE



Use Kutol® Pro **BEFORE WORK Hand Cream** at the beginning of the day to help repel and make it easier to wash away industrial soils from the skin.



STEP 2 CLEAN



Use a Kutol® Pro **Heavy Duty Hand Cleaner or Hand Wipe** to scrub away tough industrial soils throughout the workday.



STEP 3 RESTORE



Use Kutol® Pro **AFTER WORK Hand Cream** at the end of the day to help soothe, moisturize and restore dry hands.



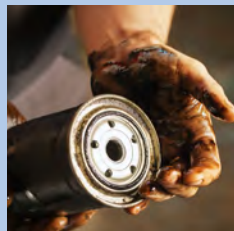
NEW! Hand Wipes ready to use, no water needed

NEW! Citra-Soft Waterless without scrubbers, no water needed

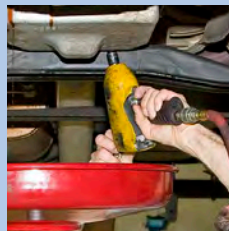
Tough Hand Cleaners for Tough Environments



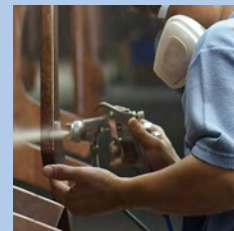
GREASE



OILS



AUTOMOTIVE FLUIDS



PAINTS

Tough Hand Cleaners for Tough Environments!

Kutol® Pro Heavy Duty Hand Cleaners were formulated to outperform the competition in removing the toughest industrial soils including grease, oil, paint, ink, lubricants, automotive fluids and adhesives, all while having low VOCs. Our wide selection of scrubbers, colors and fragrances means there is a Kutol® Pro product for any industrial application!

Kutol® Pro Heavy Duty at a Glance...

PRODUCT DIFFERENTIATION CHART - see back for detailed product guide

NAME	SOLVENT	SCRUBBERS	COLOR	FRAGRANCE	PERFORMANCE
SOCK-IT	Mineral Oil	Pumice	Bright Green	Lemon-lime	★★
REGAL	Plant Oil	Walnut Shell	Tan	Neutral	★★★
ORANGE SCRUB	Mineral Oil	Pumice & Perlite	Orange	Orange	★★
SUPER SCRUB	Plant Oil	Synthetic	Light Green	Citrus	★★
WALNUT SCRUB	Plant Oil	Pumice & Walnut Shell	Dark Tan	Rainforest	★★★
RED BLAST	Mild Solvents	Pumice	Red	Cherry	★★★
CITRA-SOFT	Plant Oil	No Scrubbers	White	Coconut-lime	★★

* Good ** Better *** Best

The Science Behind Heavy Duty Hand Cleaners

Solvents ...reduce the surface tension of water, disperse soils, and make unwanted particles easy to remove.

Surfactants ...help water spread out and attach to dirt molecules, enabling lifting and removal of dirt.

Natural Scrubbers...naturally-derived pumice, walnut shells and perlite, reach tiny places and scrub away tough soils.

Synthetic scrubbers ...wax-based paraffin is biodegradable and performs as well as plastic scrubbers.

Low VOCs ...all of our hand cleaners are under the 1% VOC (Volatile Organic Compound) limit, thus evaporate easily and are better for the environment.

Kutol® Pro hand cleaners have been precision-formulated with just the right blend of dirt removers!



Kutol® Pro Dispensing Systems

Kutol offers a wide selection of heavy duty hand cleaners in a variety of wall mount and portable dispensing options.

DuraView® Heavy Duty Wall Mount System

IMPROVED! 2 Liter & 4 Liter Cartridge

- New HDPE (High Density Polyethylene) cartridge is extremely durable
- Reduces damage during shipment and withstands tough industrial abuse
- Uses the same universal dispenser as the old PVC cartridge
- Translucent cartridge allows you to see the color and soap level more easily
- The #2 IRC code cartridge is easier to recycle than the old #3 PVC cartridge

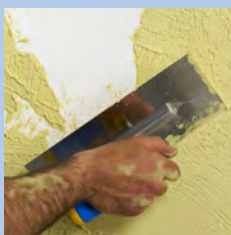


NEW! 22oz Portable Squeeze Bottle

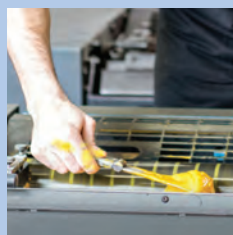
Other Dispensing Options

All of our Heavy Duty Hand Cleaners are available in Flat Top Gallons. Many formulas are also available in convenient Pump Gallons, portable 22 oz Squeeze Bottles and 3.5 L & 8 L Large Capacity refills. See back for complete list.

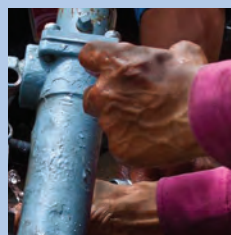
Tough Hand Cleaners for Tough Environments



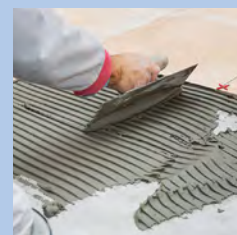
ADHESIVES



INKS



LUBRICANTS



AND MORE

HEAVY DUTY HAND CLEANERS								HAND CREAMS		HAND WIPES	
	DuraView		Flat Top	Pump	22 oz	Capacity Plus		5 oz		70 Count	
	2 Liter	4 Liter	Gallon	Gallon	Bottle	3.5 Liter	8 Liter	Tubes		Canister	
PACK SIZE	4/2L	2/4L	4/1 Gallon	4/1 Gallon	12/22 oz	2/3.5L	2/8L	12/5 oz.		6/70 Count	
Sock-It • Mineral oil-based solvent • Pumice and Low VOCs • Contains Aloe & Vitamin E • Removes grease, heavy soils, varnish, carbon black and automotive fluids • Green with Lemon-lime fragrance											
Regal • Plant oil-based solvents & surfactants • Walnut Shell scrubbers, low VOCs • Contains Aloe & Vitamin E • Removes heavy soils, inks, oil and automotive fluids • Tan with Neutral fragrance											
Orange Scrub • Mineral oil-based solvent • Pumice & Perlite • Contains d'limonene • Removes tough grease, oil, heavy soils and carbon black • Orange with Orange fragrance											
Super Scrub • Plant oil-based solvent • Synthetic scrubbers • Contains Aloe and moisturizers • Removes heavy soils, carbon black and automotive fluids • Green with Citrus fragrance											
Walnut Scrub • Plant oil-based solvents, milder on hands • Walnut Shells and Pumice, low VOCs • Contains Aloe & Vitamin E • Removes heavy soils, paint, ink, oil, grease and automotive fluids • Dark Tan with Rainforest scent											
Red Blast • No harsh solvents, milder on hands • Pumice and Low VOCs • Contains moisturizers • Removes heavy soils, paints, inks, oils, grease, tar and cutting fluids • Red with Cherry scent											
Citra-Soft (Waterless) • Plant oil-based solvent • Mildest on hands • No scrubbers and low VOCs • Can be used without water • White with Coconut-lime fragrance											

Before Work Hand Cream	After Work Hand Cream	Heavy Duty Hand Wipes	Wall Mount Bracket
• Use at the start of the day to help repel industrial soils from skin • Makes it easier to wash away dirt and grime • With aloe to help nourish skin • Ivory with mild fragrance	• Use at the end of the day • Contains allantoin to help soothe and condition skin and moisturizers to help restore dry hands • White with fresh scent	• Dual-textured, multi-purpose wipes • Industrial strength yet gentle to skin • Dries quickly with no residue • Won't scratch hard surfaces or hands • Citrus scent	• For Heavy Duty Hand Wipes • Sold separately

And FOR THE SHOWER ROOM...

Health Guard BY KUTOL

Hair & Body Shampoo

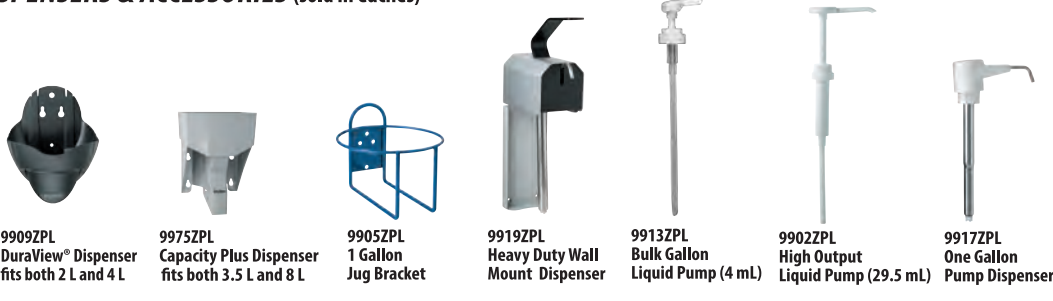
- Cleans and conditions hair & skin
- Quick sudsing and pH balanced
- Rids body of odors caused by sweat & dirt
- Clear blue color with aloe scent

7509 Pour Gallon 4 / 1 Gallon

7567 2 L DuraView® 4 / 2 L

7568 4 L DuraView® 2 / 4 L

DISPENSERS & ACCESSORIES (sold in eaches)



LIT-KPIND-0921



Hand Care Specialists **CLEAN HANDS FOR A HEALTHY WORLD**



All Kutol Pro hand cleaners and hand creams are made in the USA in our LEED® Silver Certified facility. LEED and the related logo is a trademark owned by the U.S. Green Building Council and is used with permission.