



Promotional Matting Systems

Logo & Specialty Mats

Ergonomic Mats

PRODUCT
CATALOG

www.crownmats.com

IMAGE MATTING

Greet your audience at the door with a Crown entrance mat.

Enhance brand recognition, inspire confidence, and stand out with custom image matting.

Personalize your entrance with a promotional logo image mat, that not only welcomes your audience but enhances brand recognition over time. Since 1943, we take pride in manufacturing quality commercial floor mats in Fremont, Ohio. Crown Matting Technologies delivers the widest selection of Promotional Image Mats in the matting industry.

We believe in the value of personal branding and offer you many options to enhance your Brand or share your message on high-performance entrance matting.

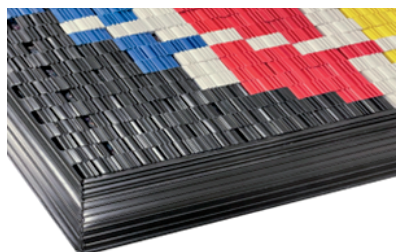
Many businesses today share office buildings and a promotional image mat can help direct new patients, customers, or students to your door.

Image matting allows you to personalize your space and enhance safety. With that in mind, we developed custom image matting solutions unique to fit your environment.

Please browse our catalog to locate the best options for your environment. If you need any help selecting the right mat to fit your environment please contact our Customer Service Representatives and we will be happy to help.

If you are undecided on which mat is best for you please request a no-charge 4" x 4" swatch sample and we will do our best to meet or exceed your matting expectations. Please contact Customer Service by email at sales@crownmats.com or call (800) 628-5463.

#060 SCRAPER Heavy Traffic



Vinyl Link Mat

ITEM DESCRIPTION

Vinyl Link mats are vibrant, colorful and stain resistant which can be used indoors or outdoors at entrances and lobbies for dependable floor protection.

The mats offer a variety of colors, patterns and custom designs.

Company logos and names are reproduced in a mosaic letter style.

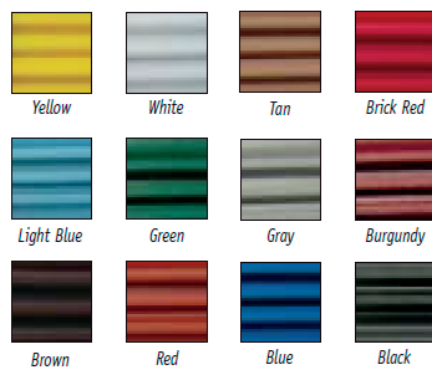
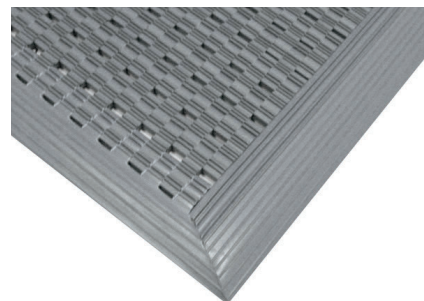
Easily maintained with a mild wash and rinse.

FEATURES

- Up to 12 colors, including the background.
- Indoor or outdoor use, great for heavy traffic areas.
- Square edging available for recessed well.

Lead Time: 30 Business days

MAT SURFACE:	MAT SIZES:	
<ul style="list-style-type: none">• 1/2" wide x 2" long extruded vinyl links on galvanized steel rods• Mosaic Letters	2' x 3'	3' x 4'
	3' x 5'	4' x 6'
	4' x 10'	
Minimum order: 1 Mat		Warranty: Total Confidence



#075|#076 SCRAPER
Light Traffic



1" Reducer Edging

Spaghetti Image Mat

ITEM DESCRIPTION

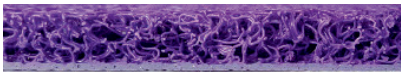
Spaghetti Image Matting combines great-looking form with functionality. Its vinyl loop construction scrapes and traps dirt and water below the surface to prevent it from tracking into a facility. An ideal promotional mat solution for indoors and outdoors.

FEATURES

- PVC loop structure with vinyl backing
- Dries quickly and resists mildew and fading
- Available without backing to facilitate the flow of water
- Easy to clean

Lead Time: 2-3 Weeks after signed art proof

MAT OPTIONS:	MAT SIZE:		THICKNESS:
<ul style="list-style-type: none">• Edging<ul style="list-style-type: none">◦ 1" Reducer◦ Rounded Edges◦ Squared Edges• Shapes<ul style="list-style-type: none">◦ Round, Half Mood, Elevator, Custum Shapes	2'x3'	4'x8'	7/16"
	3'x4'	4'x10'	7/16"
	3'x5'	4'x12'	7/16"
	3'x10'	4'x16'	7/16"
	4'x6'	4'x20'	7/16"
Minimum order: 1 Mat		Warranty: Total Confidence	



Vinyl Backed



Unbacked



#010 WIPER
Light Traffic



Flocked Mat

ITEM DESCRIPTION

Flocked imprints will be slightly raised due to the electrostatically charged nylon fiber that bonds to the matted carpet surface top adhesive. Great indoor mat for moderate to low traffic areas. Suggested applications to be placed in small retail stores, insurance offices, medical offices, or lobby areas as a promotional mat.

FEATURES

- Choose up to 4 imprint colors – Set-up fee required
- 20 PMS imprint colors available – special colors upon request. Additional surcharge may apply, contact Customer Service.
- Choose your Mat Surface:

Rely-On - 100% Olefin Mat - Preferred for light traffic areas

Eco-Step - 100% recycled surface - Popular for medium traffic areas

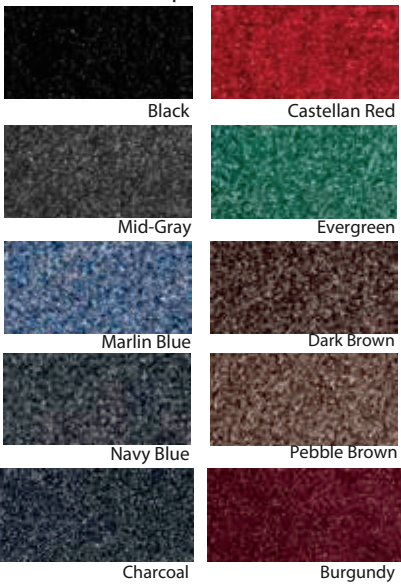
Lead Time: 2 - 3 weeks after signed proof

MAT SURFACE OPTIONS:	MAT SIZE:		THICKNESS:
Rely-On - 100% Olefin mat with vinyl backing absorbs moisture, traps fine dust and protects floors	2' x 3'	4' x 8'	7/16"
	3' x 4'	4' x 10'	7/16"
	3' x 5'	4' x 12'	7/16"
Eco-Step - 100% recycled surface with vinyl backing absorbs moisture, traps fine dust and protects floors	4' x 6'	4' x 20'	7/16"
Minimum order: 1 Mat		Warranty: Total Confidence	

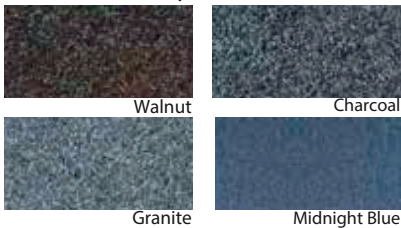
IMPRINT | PMS COLORS



MAT SURFACE | RELY-ON COLORS



MAT SURFACE | ECO-STEP COLORS



#040 SCRAPER

Medium Traffic



IMPRINT | PMS COLORS



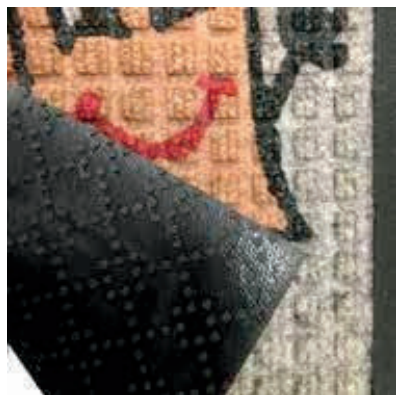
Extended colors available

#025 SCRAPER/ WIPER

Medium Traffic



Smooth Rubber borders



Nitrile rubber cleated backing

Crown-Tred Printed

ITEM DESCRIPTION

Crown-Tred Printed mats are great for heavy traffic areas for outdoor or indoor entrances. Imprint image is digitally printed on a thermoplastic material and molded to a nitrile rubber mat which allows excellent color tones and color variations. The permanent digital bond process allows for a longer lasting impression.

FEATURES

- No set up charge
- Digital thermoplastic imprint is UV resistant
- Tolerance up to 3% on mat size, not trade sizes
- Choose up to 150 AVAILABLE colors – *PMS color match available (surcharge)
- Durable 1/4" thick nitrile rubber mat is oil, grease and chemical resistant
- Best for Small Retail Stores, Independent Insurance Offices
- Made in USA

Lead Time: 2- 3 weeks after signed proof

TRADE SIZES:		THICKNESS:
2' 6" x 3'	4' x 8'	1/4"
3' x 5'	6' x 6'	1/4"
3' x 10'	6' x 8'	1/4"
4' x 6'		1/4"
Minimum order: 1 Mat		Warranty: Total Confidence

MAT SURFACE | BASE COLORS



Black



Super-Soaker Inlay

ITEM DESCRIPTION

Super-Soaker Inlay entrance mat can be used indoors and outdoors if under an overhang cover, making it well-suited for medium traffic entrance ways. Recommended mat for office buildings, schools, restaurants, and malls.

FEATURES

- No setup fee for camera ready art
- Fabric borders or smooth rubber borders
- Tolerance up to 3% on mat size, not trade sizes
- 100% solution dyed polypropylene surface that will not fade or rot
- Nitrile rubber cleated backing allows safe mat placement on carpet or on non-carpeted floors.
- Manufactured in the USA

Lead Time: 2- 3weeks after signed proof

TRADE SIZES:						THICKNESS:
2' x 3'	3' x 12'	4' x 10'	6' x 5'	6' x 20'		3/8"
3' x 4'	3' x 15'	4' x 12'	6' x 6'			3/8"
3' x 5'	3' x 20'	4' x 14'	6' x 8'			3/8"
3' x 6'	4' x 6'	4' x 16'	6' x 10'			3/8"
3' x 10'	4' x 8'	4' x 20'	6' x 12'			3/8"
Minimum order: 1 Mat						Warranty: Total Confidence

MAT SURFACE | BASE COLORS



Medium Brown

Dark Brown

Medium Gray



Charcoal

Evergreen

Navy



Charcoal

Bluestone

Red/Black

IMPRINT | PMS COLORS



White

Yellow

Gold



Purple

Orange

Solid Red



Bordeaux

Light Green

Aquamarine

#035 WIPER
Heavy Traffic



HD Jet-Print

ITEM DESCRIPTION

Enhanced color definition up to 10x's more compared to a standard jet printed mat. Perfect image mat solutions for extremely fine detailed logos or images with gradient color transisitons.

FEATURES

- Choose up to 150 printed colors
- Solid vinyl backing and vinyl borders traps in liquids and fine dirt
- PMS Color Match available for additional fee, only 2 PMS colors per image design and must not be the mat background color
- Complimentary proof sketch
- No setup charge. Camera ready art required.
- Made in the USA

Lead Time: 2-3 weeks after signed proof

MAT SURFACE:	MAT SIZE:		THICKNESS:
100% printed cut-pile nylon top surface, total weight 0.45lbs per square foot	2' x 3'	4' x 8'	5/16"
	3' x 4'	5' x 8'	5/16"
	3' x 5'	5' x 10'	5/16"
	3' x 10'	6' x 12'	5/16"
	4' x 6'	6' x 10'	5/16"
Minimum order: 1 Mat		Warranty: Total Confidence	

MAT | BASE/IMPRINT COLORS



Extended colors available

#030 WIPER
Heavy Traffic



Jet Print

ITEM DESCRIPTION

Great indoor nylon printed mat for moderate traffic areas best for schools, restaurants, retail stores, and office buildings. Best for simple contrasting color logos or images without gradient colors.

FEATURES

- 26 mat base color options
- Standard Colors - up to 300 color options for logo or image printing
- PMS Color Match is available for an additional fee, only 2 PMS colors per design and must not be the mat background-color
- Standard 52 mil rubber cleated backing with rubber borders traps in liquids and fine dirt
- 1 Complimentary sketch proof
- No setup fee for camera-ready art
- Made in the USA

Lead Time: 2- 3 Days after signed proof

MAT SURFACE:	TRADE SIZES:		THICKNESS:
100% printed cut-pile nylon top surface, total weight 0.45 lbs. per square foot	2' x 3'	4' x 8'	5/16"
	3' x 4'	5' x 8'	5/16"
	3' x 5'	5' x 10'	5/16"
	3' x 10'	6' x 10'	5/16"
	4' x 6'	6' x 12'	5/16"
Minimum order: 1 Mat		Warranty: Total Confidence	

MAT SURFACE | BASE COLORS

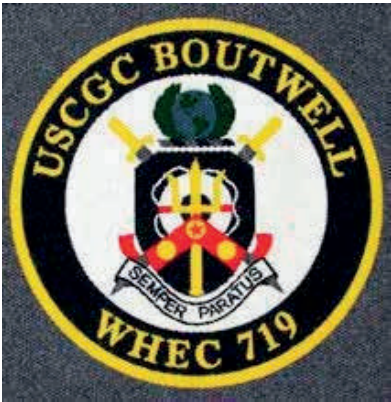


MAT | BASE/IMPRINT COLORS



Extended colors available

Super Berber Inlay



ITEM DESCRIPTION

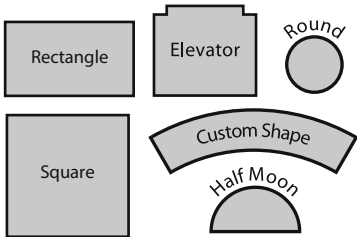
Distinguish yourself with the largest custom logo mat available! Super Berber Inlay needle punch quality mats are designed to promote your logo and protect all floor surfaces from wetness, dirt, and debris. Known for delivering ultimate scraper and wiper performance in one mat. Super Berber Inlay mats are a perfect solution to "welcome" a customer at all entranceways, office building lobbies, schools, airports, and sports concourses; all while keeping dirt at bay and decreasing your maintenance costs. Camera-ready artwork is required for before a quote can be issued.

FEATURES

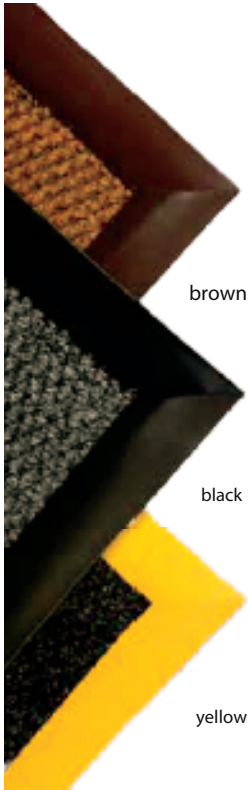
- 100% Solution Dyed Polypropylene Berber, UV, and abrasion-resistant
- Mat custom width size: minimum 2', maximum 13'-2"
- Inlay custom length size: minimum 1', maximum 100'
- Maximum Durability All-weather rubber backing
- Standard borders are Black. Brown & Yellow are available upon request.
- Manufactured in the USA

MAT SURFACE:	STANDARD SIZES:					THICKNESS:
<ul style="list-style-type: none">• 100% Solution Dyed Polypropylene• Berber, UV, and abrasion resistant• Fiber Weight: 52 oz. yd2 1,474 g/m2• Total Weight: 93 oz. yd2 2,637 g/m2 Edging options: <ul style="list-style-type: none">• Choose between<ul style="list-style-type: none">◦ Heat sealed◦ Square cut◦ Beveled cut	2' x 3'	3' x 10'	4' x 12'	6' x 5'	6' x 20'	1/2"
	3' x 4'	3' x 12'	4' x 14'	6' x 6'	8' x 12'	1/2"
	3' x 5'	4' x 6'	4' x 16'	6' x 8'	12' x 12'	1/2"
	3' x 6'	4' x 8'	4' x 18'	6' x 10'		1/2"
	3' x 8'	4' x 10'	4' x 20'	6' x 12'		1/2"
Minimum order: 1 Mat Warranty: Total Confidence *All sizes are +/- 0.5". Please specify if size needs to be exact						

Custom Shapes:



Edging options



MAT SURFACE | BASE COLORS AND IMPRINT COLORS



#050 DRY AREA
Anti-Fatigue



Style 1: Embossed – monotone base color

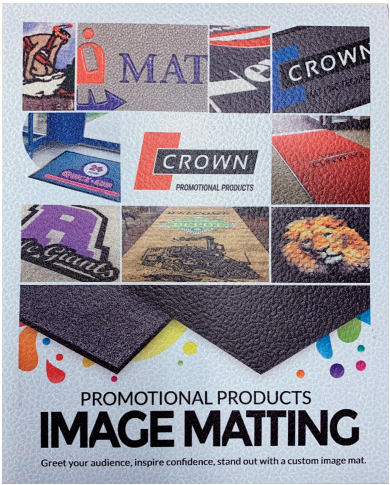


Style 2: Embossed – vinyl imprint color



Style 4: Embossed – Digital Film imprint color

#070 DRY AREA
Light Traffic



Embossed Anti-Fatigue Mat

ITEM DESCRIPTION

Crown's embossed anti-fatigue indoor mats offer you style and comfort for tired feet and legs. Select between three finish styles to apply your logo to our exclusive anti-fatigue foam mats. An ideal promotional mat solution for large corporations, franchises, or to simply give to your customers. Embossed mats are a great choice for veterinary clinics, indoor playgrounds, automotive showrooms, kiosks, or workstations.

FEATURES

- Comfort-King w/patented Zedlan anti-fatigue foam
- Tuff-Spun - popular anti-fatigue foam
- Mat tolerance up to 5%
- Choose between **Style 1, Style 2, Style 4**
- Comfort-King option is anti-microbial
- Tooling charge is applicable
- 50 Mats/Flat packed minimum order. Boxes upon request.
- Made in the USA.

IMAGE FINISH:

Style 1: Embossed – monotone; base color

Style 2: Embossed – vinyl; imprint color

Style 4: Embossed – digital film imprint image

Lead Time: 4-5 weeks upon artwork approval

Additional info: Camera-ready artwork is required before pricing can be calculated. Custom sizes may be available, ask Customer Service for more details.

MAT SURFACE:	MAT SIZES:	THICKNESS:
<ul style="list-style-type: none">• Comfort-King - made with prefer red Zedlan anti-fatigue foam.<ul style="list-style-type: none">◦ 1/2" Thickness available• Tuff spun standard industrial grade anti-fatigue foam.	2' x 3'	3/8"
	3' x 4'	3/8"
	3' x 5'	3/8"
	3' x 10'	3/8"
Minimum order: 50 Mats		Warranty: Total Confidence

COMFORT-KING | ZEDLAN
ANTI-FATIGUE FOAM



Black



Steel Gray



Royal Blue

TUFF-SPUN | INDUSTRIAL
ANTI-FATIGUE FOAM

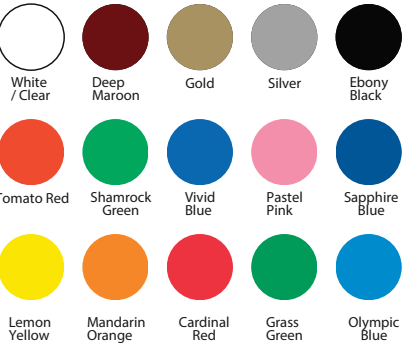


Black



Gray

IMPRINT | PMS COLORS



Pro-Tekt Printed

ITEM DESCRIPTION

The Pro-Tekt Printed mat is a digital print mat. The pebble surface offers slip resistance while its low profile prevents the risk of trips and falls.

FEATURES

- Digitally printed on the pebbled surface of Pro-Tekt Mat
- Slip Resistant
- Easy to Clean
- Lightweight and flexible with a low profile

MAT SURFACE:	MAT SIZES:
<ul style="list-style-type: none">• Vinyl Foam• Pebble surface• Mat Color: Black• Color Match Available	2' x 3'
Minimum order: 1 Mat	
Warranty: Total Confidence	



Pebble Surface

WHY BUY CROWN MATS

Crown Image Matting offers a full line of floor matting solutions to create an inviting atmosphere. We are in business to serve you. We hold honor in our service and production process to produce durable matting solutions in Fremont, Ohio. If you're not satisfied with your mats please call (800)-MAT-LINE.

HOW TO BUY

We proudly serve a global distribution network, it's easy to put the strength of our matting solutions to work for you. Simply call our customer service team at (800)-MAT-LINE (628-5463) or visit our website at www.crownmats.com to locate a matting specialist near you.

WARRANTY POLICIES

Crown Matting Technologies minimum warranty is a limited warranty based on product type. Contact your Crown Matting representative for Image Matting warranty information.

PATENTS, COPYRIGHTS, TRADEMARKS

Upon signing the final proof, the purchaser assumes all liability that may result from action taken against Crown Matting Technologies for patent, copyright, or trademark infringement.

SHIPPING

FOB Factory. We reserve the right to ship by the most beneficial means of transportation. Smaller orders will be shipped via truck line carrier.

TERMS & CONDITIONS

Refer to the Crown Promotional Image Matting Price List.

VARIANCES

Mat sizes are not always an exact measurement and typically have a 3-5% variance due to the materials and manufacturing processes. Colors may not be exact match of previous order. We recommend purchasing 2 mats per order.

Actual colors in the catalog or online may vary slightly from product. Please request a base color swatch sample for your final color selection.

NOTIFICATIONS

Upon final approval, the purchaser authorizes Crown Matting Technologies to use a sample of the product for publication and publicity concerning Crown's Image Matting program. Logos shown in this catalog are for display only. Display logos may only be purchased through the company or representative of that company owning the rights to the logo or promotional messages.

Additional matting processes may become available including the option to order Vinyl Link mats. Please contact customer service for details.



2100 Commerce Drive
Fremont, Ohio 43420
(800) MAT-LINE (628-5463)
www.crownmats.com



ASI 68173



112406



C22Y22